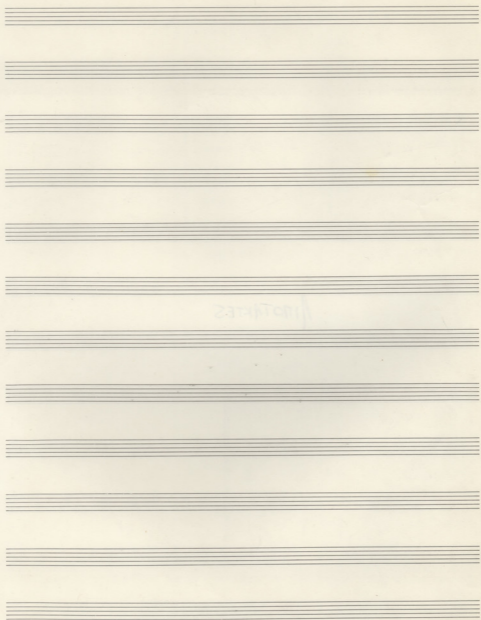


NOTAKES



MIKHIS THEODORAKIS

# ΛΙΠΟΤΑΚΤΕΣ

ΓΙΑΝΝΗΣ ΘΕΟΔΩΡΑΚΗΣ

## ΟΜΟΡΦΗ ΠΡΑΗ

$\text{♩} = 66$

*Soprano*  $\text{C}$  *Alto*  $\text{C}$  *Tenore*  $\text{C}$  *Basso*  $\text{C}$

*Soprano* O. μορφη noi ta pu

*Alto* pp *Tenore* pp *Basso* p

O. μορφη noi ta pu

O. μορφη noi ta pu.

*Contralto* *Mezzosoprano* *F* *Timpani*

VES. μ8. σι ΚΕΣ α. ΝΕ ΠΑΥ. ΤΩ ΣΠΑ ΜΟΙ ΚΙΕ ΝΕ - VES. ΜΑ

UNIS. VES. μ8. σι ΚΕΣ . α. ΝΕ - ΠΑΥ. ΤΩ ΣΠΑ ΜΟΙ ΚΙΕ ΝΕ VES. ΜΑ

UNIS. VES. μ8. σι ΚΕΣ . . α. ΝΕ ΠΑΥ. ΤΩ ΣΠΑ ΜΟΙ ΚΙΕ ΝΕ - VES. ΜΑ

VES. μ8. σι ΚΕΣ α. ΝΕ ΠΑΥ. ΤΩ ΣΠΑ ΜΟΙ ΚΙΕ ΝΕ - VES. ΜΑ

*P*

TIÉS                    ὁ                    υἱὸς τοῦ Χριστοῦ                    ἐστίν.                    Χε - ρια σναρ.

TIÉS                    ὁ                    υἱὸς τοῦ Χριστοῦ                    ἐστίν.                    Χε ρια σναρ

TIÉS                    ὁ . . ὁ                    υἱὸς τοῦ Χριστοῦ                    ἐστίν.                    Χε - ρια σναρ

TIÉS                    ὁ                    υἱὸς τοῦ Χριστοῦ                    ἐστίν.                    Χε ρια σναρ.

*ccan mf*                    *F*                    *ccan*

χε - - - - - να                    . . . . . βοῶ να - κει γιναι ημῶν θε

χε - - - - - να                    . . . . . βοῶ να κει γιναι ημῶν θε

χε - - - - - να                    . . . . . βοῶ να κει γιναι ημῶν θε

χε - - - - - να                    . . . . . βοῶ να - κει γιναι ημῶν θε

FF

dim . . .

.3.  
mf less

PP (25)

Handwritten musical score for the first system, measures 25-28. The score is written on four staves. The top staff is the vocal line in treble clef, with lyrics: "ka pa an-tu ke . . . va . . . Ga yi- vas Se". The second staff is the piano accompaniment in treble clef, with lyrics: "ka pa an-tu ke . . . va . . . Ga yi- vas Se". The third staff is the bass line in bass clef, with lyrics: "ka pa an-tu ke . . . va . . . Ga yi- vas Se". The fourth staff is a lower bass line in bass clef, with lyrics: "ka pa an-tu ke . . . va . . . Ga yi- vas Se". The music includes various note values, rests, and dynamic markings.

mf - P (30)

Handwritten musical score for the second system, measures 30-33. The score is written on four staves. The top staff is the vocal line in treble clef, with lyrics: "Kna - hov . . . neiv ne ser hi vu- xta Tai xtu-". The second staff is the piano accompaniment in treble clef, with lyrics: "Kna - hov . . . neiv ne ser hi vu- xta Tai xtu-". The third staff is the bass line in bass clef, with lyrics: "Kna - hov . . . neiv ne ser hi vu- xta". The fourth staff is a lower bass line in bass clef, with lyrics: "Kna - . . . hov neiv ne ser hi vu- xta". The music includes various note values, rests, and dynamic markings.

Cresce Poco a Poco

mf *dim* p *dim* PP

Handwritten musical score for the first system, featuring four staves with vocal lines and piano accompaniment. The lyrics are in Greek: "κα τα φω τα ηρι ει ηαν ει - - - χτυν 35 ει". The score includes dynamic markings (mf, p, PP) and a crescendo instruction (Cresce Poco a Poco).

Handwritten musical score for the second system, featuring four staves with vocal lines and piano accompaniment. The lyrics are in Greek: "γι υεις ει κνα - ποσ". The score includes dynamic markings (mf, p, PP) and a crescendo instruction (Cresce Poco a Poco).

ff

(45)

Handwritten musical score for the first system, featuring four staves with Greek lyrics and musical notation. The lyrics are: Η ΒΟΥΧΤΑ ΕΨΤΑ ΣΕ ΤΑ-ΠΑΡΑ ΠΑ-ΘΟΥ-ΡΑ ΚΥΒΙ-ΣΑΝ Η

ΕΨΤΑ ΣΕ ΤΑ-ΠΑΡΑ ΠΑ-ΘΟΥ-ΡΑ ΚΥΒΙ-ΣΑΝ Η

ΕΨΤΑ ΣΕ ΤΑ-ΠΑΡΑ ΠΑ-ΘΟΥ-ΡΑ ΚΥΒΙ-ΣΑΝ Η

Η ΒΟΥΧΤΑ ΕΨΤΑ ΣΕ ΤΑ-ΠΑΡΑ ΠΑ-ΘΟΥ-ΡΑ ΚΥΒΙ-ΣΑΝ Η

mf

F

dim

P

PP

(50)

Handwritten musical score for the second system, featuring four staves with Greek lyrics and musical notation. The lyrics are: ΒΟΥΧΤΑ ΕΝΕ ΣΕ ΟΙ ΕΠΟ-ΚΟΙ-ΧΑΝ ΣΗ-ΚΑΝ

ΒΟΥΧΤΑ ΕΝΕ ΣΕ ΟΙ ΕΠΟ-ΚΟΙ-ΧΑΝ ΣΗ-ΚΑΝ.

ΒΟΥΧΤΑ ΕΝΕ ΣΕ ΟΙ ΕΠΟ-ΚΟΙ-ΧΑΝ ΣΗ-ΚΑΝ

ΒΟΥΧΤΑ ΕΝΕ ΣΕ ΟΙ ΕΠΟ-ΚΟΙ-ΧΑΝ ΣΗ-ΚΑΝ

*Handwritten signature and date:*  
 Βραχάκης  
 23. IV. 83

# ΔΑΚΡΥΣΜΕΝΑ ΝΑΤΙΑ

♩ = 120

pp. (senza peso accento)

**SOPRANO**  $\text{b} \frac{3}{4}$  ♩ ♩ ♩ ♩ ♩ ♩

**ALTI**  $\text{b} \frac{3}{4}$  ♩ ♩ ♩ ♩ ♩ ♩

**TENORI**  $\text{b} \frac{3}{4}$  ♩ ♩ ♩ ♩ ♩ ♩

**BASSI**  $\text{b} \frac{3}{4}$  ♩ ♩ ♩ ♩ ♩ ♩

Da Na ope ka Tia vu HE  
Na Na hi Sia kos lat po

Da kpu ope va kos Tia vu oroy HE vce  
Comandate Noi. Tat hi Kap Sia kos lat kot po vce.

**Kh** ♩ ♩ ♩ ♩ ♩ ♩

**Tf** ♩ ♩ ♩ ♩ ♩ ♩

**Km** ♩ ♩ ♩ ♩ ♩ ♩

**Tf** ♩ ♩ ♩ ♩ ♩ ♩

**Km** ♩ ♩ ♩ ♩ ♩ ♩

**Tf** ♩ ♩ ♩ ♩ ♩ ♩

o Na pa ka Tia  
Na hi Sia kos

o. vce. pa kot kos Tia ois  
vce-tov hi ka Tia kos





Handwritten musical score for a vocal ensemble, featuring Soprano, Alto, Tenor, and Bass parts. The score includes lyrics in Cyrillic and dynamic markings.

**Soprano:** sta a, sta a, sta a, n. H3, vt H1

**Alto:** sta a, sta a, Xpu G, n. H3, vt H1

**Tenor:** sta a, sta a, Xpu G, n. H3, vt H1

**Bass:** sta a, sta a, Xpu G, n. H3, vt H1

**Lyrics:** sta Xi- sta - des Xpu ka ta - ay h. ta vt va  
 aspaqre pa - sta. G . . . H3 sto H1 on

*meno contrabasso*  
*ritardando* **F**

Handwritten musical score for a vocal ensemble, featuring Soprano, Alto, Tenor, and Bass parts. The score includes lyrics in Cyrillic and dynamic markings.

**Soprano:** va H, va H, va H, va H, va H, va H

**Alto:** va H, va H, va H, va H, va H, va H

**Tenor:** va H, va H, va H, va H, va H, va H

**Bass:** va H, va H, va H, va H, va H, va H

**Lyrics:** va H, va H, va H, va H, va H, va H

**Dynamic markings:** *mf*, **F**

**Text:** (Con accent)

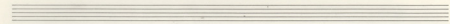
Handwritten musical score for the first system, featuring vocal lines and piano accompaniment. The music is in G-flat major (one flat) and 4/4 time. The lyrics are in Finnish.

**Vocal Line 1:**  
 la - pnt po - as te pi va - tau

**Vocal Line 2 (marked 'A'):**  
 la. po - as. te pi. - - va.

**Piano Line 1:**  
 la - pnt po ste - - pi va - tau

**Piano Line 2:**  
 la - pnt. po as - te - - pi - - va - tau



Handwritten musical score for the second system, continuing the vocal and piano parts. The lyrics are in Finnish.

**Vocal Line 1:**  
 si ka - tta ka - si. ko - no - ka

**Vocal Line 2:**  
 si. ka tta ka - - si. no - ka

**Piano Line 1:**  
 si. ka - tta - - ka - - si. ko - no

**Piano Line 2:**  
 si ka - tta. - ka - - si - ko no ka -

Handwritten musical score for the first system, featuring vocal lines and piano accompaniment in G major and 4/4 time. The score consists of five staves: a vocal line (treble clef), a grand staff (treble and bass clefs), and two bass lines (bass clefs). The lyrics are written below the vocal line.

Vocal line (treble clef):  
 Xau - pi a opa pte pa - ota Gi -

Grand staff (treble and bass clefs):  
 Xau pi - - a - pa - ota Gi

Bass line 1 (bass clef):  
 Xau - - pi a opa pte pa ota Gi - -

Bass line 2 (bass clef):  
 Xau - - pi - - a opa pte pa ota - Gi - -

Handwritten musical score for the second system, continuing the vocal and piano parts from the first system. The score consists of five staves: a vocal line (treble clef), a grand staff (treble and bass clefs), and two bass lines (bass clefs). The lyrics are written below the vocal line.

Vocal line (treble clef):  
 - hes ota he - ota ht ei

Grand staff (treble and bass clefs):  
 - - - hes ht - ota ht ei - -

Bass line 1 (bass clef):  
 - - - ht ota - ht - ota ht - - ei - -

Bass line 2 (bass clef):  
 - - - ht - ota ht ota - ht - - ei - -

Handwritten musical score for the first system, featuring five staves. The top staff is a vocal line with lyrics: "а сра-фт по-сна. Ге - - - - - Мг-сто". The second staff is a piano accompaniment with lyrics: "а. по-сна. Ге - - - - - Мг-сто". The third staff is a vocal line with lyrics: "а сра-фт по - - - - - Ге - - - - -". The fourth staff is a piano accompaniment with lyrics: "а сра-фт по - - - - - Ге - - - - -". The fifth staff is a piano accompaniment with lyrics: "а сра-фт по сна - Ге - - - - - Мг - сто".

Handwritten musical score for the second system, featuring five staves. The top staff is a vocal line with lyrics: "т-он т-и е-и". The second staff is a piano accompaniment with lyrics: "т-и т-и - - - - - е-и". The third staff is a piano accompaniment with lyrics: "т-и - - - - - т-и - - - - - е-и - - - - -". The fourth staff is a piano accompaniment with lyrics: "т-и - он т-и - - - - - е-и - - - - -". The fifth staff is a piano accompaniment with lyrics: "т-и он - т-и - - - - - е-и - - - - -". The system concludes with "DACAPO" and "FINE".

Boxer  
25.11.83



S  
A

Stouft hi Kai vivri Kai Ketaon ka - Epa na pa Gu

T

Stouft hi Kai. vivri Kai Ketaon ka - Epa na pa Gu

B

S  
A

pa pas Eke na ce ar pas ar. pasrou Epw Tai pas

T

pa pas Eke na ce ar. pas ar. pasrou Epw tai pas

B

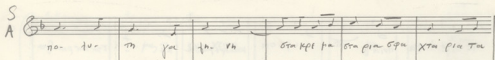
S  
A

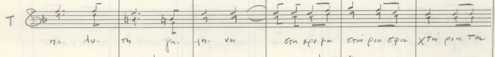
Eke na ce ar. pas ar. pasrou Epw tai pas Ti vu Xriste.

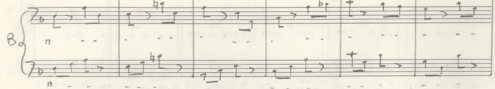
T

Eke na ce ar. pas ar. pasrou Epw tai pas Ti vu Xriste

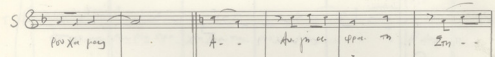
B

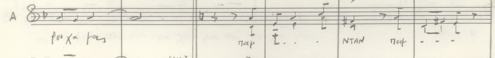
S  
A  no. tu. m. ye. fa. va. Gra. spi. ta. Gra. pia. e. pa. X. ti. pi. tu.

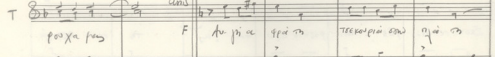
T  no. tu. m. ye. va. Gra. spi. ta. Gra. pia. e. pa. X. ti. pi. tu.

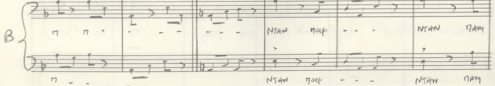
B 

Empty musical staves for additional parts.

S  po. xa. pa. A. Au. pi. ce. i. pa. m. Em. - -

A  po. xa. pa. rap. E. - - NTAN. rap. - - -

T  po. xa. pa. cons. F. Au. pi. ce. i. pa. m. TE. KO. pi. ce. pa. m. i. pa. m.

B 

Empty musical staves for additional parts.



S: n'ha tse kau fia om n'ha . . . . .

A: n'han nam - - - n'han nam - - - n'han nam - - -

T: aen'is kau fir vai seg se fu-geh kau n'vise

B: - - - n'han nam - - - n'han nam - - - n'han nam - - -

S: - - - - - ta kau fah pa om ke . . . . . eken ee aet.

A: - - - - - nam . . . . . nam . . . . .

T: kau fah pa om ke - - - - - eku na pa gu e-i h'as eken-ee ee aet.

B: nam nam - - - - - nam nam - - - - - nam . . . . . eken ee aet.

S: h'is aet h'is ton e pu tai h'as eken ee aet h'is . . . . . aet h'is ton e pu

A: aet . . . . . h'is ton . . . . . e pu tai aet . . . . . h'is ton . . . . . e pu

T: h'is aet h'is ton e pu tai h'as eken ee aet h'is aet h'is ton e pu

B: h'is aet h'is ton e pu tai h'as eken ee aet h'is aet h'is ton

div

S TA. . . . . pag th vu Xra di no lu th ya th . . .

A TA. . . . . pag th vu Xra di no lu th ya th th

T Tu pag . . . th vu Xra di no lu th ya th. vs

B epw tu - . . . pag th vu Xra di no lu th ya th . . .

S vs sta kpa sta pia epa Xra pia ta pa Xa pag . . . P. less

A sta kpa sta pia epa Xra pia ta pa Xa pag . . . P. less

T sta kpa sta pia epa Xra pia ta pa Xa pag . . . P. less

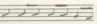
B vs sta kpa sta pia epa Xra pia ta pa Xa pag . . .

Empty musical staves for vocal parts.

## XASHKA

$\text{♩} = 52$

*S*  
m. la esp. ca.

**CORO A**  $8^{\text{a}} \frac{4}{4}$  - - - |  |

(Sopr. Alt. Tenor Bass)

*Calma*

**Sopr.**  $8^{\text{a}} \frac{4}{4}$  |  $\text{♩}$   $\text{♩}$  |  $\text{♩}$  |  $\text{♩}$   $\text{♩}$   $\text{♩}$  |  $\text{♩}$   $\text{♩}$   $\text{♩}$  |

P Xa Sh. ka te ca oas Spi. p. s. o. s. te se o. o. j. i.

**Alt.**  $8^{\text{a}} \frac{4}{4}$  |  $\text{♩}$   $\text{♩}$  |  $\text{♩}$  |  $\text{♩}$   $\text{♩}$   $\text{♩}$  |  $\text{♩}$   $\text{♩}$   $\text{♩}$  |

P Xa Sh. ka te ca oas Spi. p. s. o. s. te se o. o. j. i.

**CORO B**

**Ten.**  $8^{\text{a}} \frac{4}{4}$  |  $\text{♩}$   $\text{♩}$  |  $\text{♩}$  |  $\text{♩}$   $\text{♩}$   $\text{♩}$  |  $\text{♩}$   $\text{♩}$   $\text{♩}$  |

P Xa Sh. ka te ca oas Spi. p. s. o. s. te se o. o. j. i.

**Bass.**  $8^{\text{a}} \frac{4}{4}$  |  $\text{♩}$   $\text{♩}$  |  $\text{♩}$  |  $\text{♩}$   $\text{♩}$   $\text{♩}$  |  $\text{♩}$   $\text{♩}$   $\text{♩}$  |

P Xa Sh. ka te ca oas Spi. p. s. o. s. te se o. o. j. i.

Coro  
A

S  
 A  
 T  
 B

na- ta ka fi hi tai so ka - ki na pa fi pe ta ju ka - va  
 he he-se sa-ya na na. Tu  
 he. he-se sa-ya na na. Tu  
 he. he-se sa-ya na na. Tu  
 he he-se sa-ya na na. Tu

Coro  
A

Tutti FINE

*F molto costante*

S  
 A  
 T  
 B

Xa-ya ka F Xa-ya ka he sa-ya. Spi he-se he-se sa-ya  
 Xa-ya ka F Xa-ya ka he sa-ya Spi he-se he-se sa-ya  
 Xa-ya ka F Xa-ya ka he sa-ya Spi he-se he-se sa-ya  
 Xa-ya ka F Xa-ya ka he sa-ya Spi he-se he-se sa-ya

FINE

Soprano: *nav - ta pa fi hê ta so ka - kia - pa fi hê ta fi pa - via*

Alto: *nav - ta pa fi hê ta so ka - kia - pa fi hê ta fi pa - via*

Tenore: *nav - ta pa fi hê ta so ka - kia - pa fi hê ta fi pa - via*

Basso: *nav - ta pa fi hê ta so ka - kia - pa fi hê ta fi pa - via*

Soprano: *dim* *p* *A ..*

Alto: *dim* *p* *A ..* *p* *fi a ti. Séu ex - ta tu qre*

Tenore: *dim* *p* *A ..* *fi a tu*

Basso: *dim* *p* *A ..* *fi a ti. Séu ex - ta tu qre*

Handwritten musical score for the first system, featuring four staves with lyrics in Greek. The music is written in treble clef with a key signature of one sharp (F#) and a 3/4 time signature. The lyrics are: A. . . A . . . Kai ti l - viv Pa A . . . Kai Xi se va Kai ti viv A . . . Pa A . . . Pa Kai Xi se va Kai ti viv Pa . . .

. Cōse Pico apoco . . .

Handwritten musical score for the second system, featuring four staves with lyrics in Greek. The music is written in treble clef with a key signature of one sharp (F#) and a 3/4 time signature. The lyrics are: pa-nol. ta Kai to je pa - ve Kai to je ti. pa-nol. ta A - - Kai to je A . . . o - va pa ni A . . . Kai to je A - . . . Xi se va pa ni Kai to je pa ve

FF *dim* P

μαρτὴν σου πρὸ κρῶ      Για τὴν ψὺν σου μαρτὴν      μὰ - σοῦ      καὶ

μαρτὴν σου πρὸ κρῶ      Για τὴν ψὺν σου μαρτὴν      μὰ - σοῦ      καὶ

μαρτὴν σου πρὸ κρῶ      Για τὴν ψὺν σου μαρτὴν      μὰ - σοῦ      καὶ

μαρτὴν σου πρὸ κρῶ      Για τὴν ψὺν σου μαρτὴν      μὰ - σοῦ

*dim*

ὁμοῦ σου μαρτὴν μὰ - σοῦ

ὁμοῦ σου μαρτὴν μὰ - σοῦ

ὁμοῦ σου μαρτὴν μὰ - σοῦ

ὁμοῦ σου μαρτὴν μὰ σοῦ

*M. J. Edwards*  
*Assn. 28. IV. 85*

