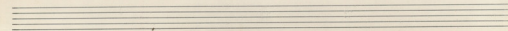
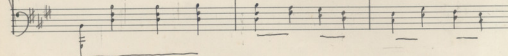
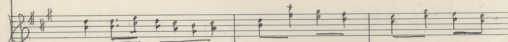
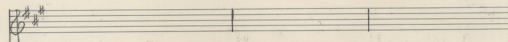
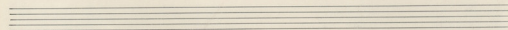
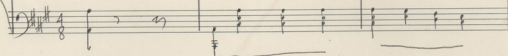
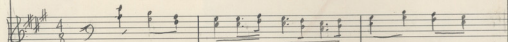
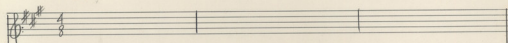
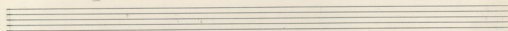
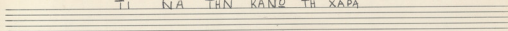


TI NA THN KANQ TH XAPA

TI NA THN KANQ TH XAPA



ΤΙ ΝΑ ΤΗΝ ΚΑΝΩ ΤΗ ΧΑΡΑ

Kap - σε μου  
Tai - σε γι'

Foros zini Pio pia pou xu tra xu - tra uer  
sa ote pa vi ota pa) gió kai - tseu va

Handwritten musical notation for the first system, featuring a vocal line with lyrics and a piano accompaniment. The lyrics are: *cu se epai - vers mp - om - xa* and *tra you bi - cw. pa o see - ray-*

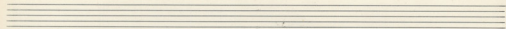
Piano accompaniment for the first system, showing chords and bass lines.

Handwritten musical notation for the second system, featuring a vocal line with lyrics and a piano accompaniment. The lyrics are: *pa kon za sou pro epai dox - Kai ou sw ka ze eai -* and *hos pou wri ju zhi fi jio kib jo ju pi jo ti -*

Piano accompaniment for the second system, showing chords and bass lines.

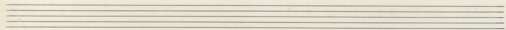
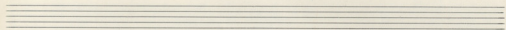
Handwritten musical score for the first system. The vocal line is in G major (one sharp) and 4/4 time. The lyrics are: "vhs gw" followed by a rest, then "Ti ya tw ka vu zu - xa". The piano accompaniment consists of a right hand with chords and a left hand with block chords.

Handwritten musical score for the second system. The vocal line continues with the lyrics: "pa xa pa olon ou zu e -". The piano accompaniment continues with chords and rests in the left hand.



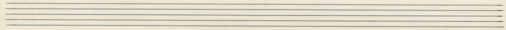
Musical notation for the first system, featuring a vocal line in G major and a piano accompaniment. The lyrics are: *Na zhi sm ko sw sta - Ba*

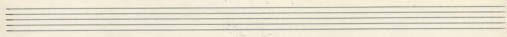
Musical notation for the second system, featuring a vocal line in G major and a piano accompaniment.



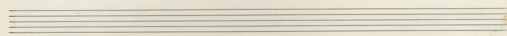
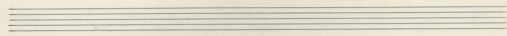
Musical notation for the third system, featuring a vocal line in G major and a piano accompaniment. The lyrics are: *va sto kru o sw av - te -*

Musical notation for the fourth system, featuring a vocal line in G major and a piano accompaniment.

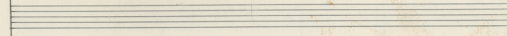




Musical score for the first system, featuring a vocal line and a piano accompaniment. The key signature is two sharps (F# and C#), and the time signature is common time (C). The lyrics are: "Xη Στο ομι τι Κο μοσι ναi δεε".



Musical score for the second system, featuring a vocal line and a piano accompaniment. The key signature is two sharps (F# and C#), and the time signature is common time (C). The lyrics are: "va - - - - και με σα του ο το ερε- χει".



Musical score for the third system, featuring a piano accompaniment. The key signature is two sharps (F# and C#), and the time signature is common time (C). The system concludes with a double bar line and the word "FIN" written in both the vocal and piano staves.

