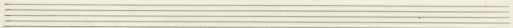
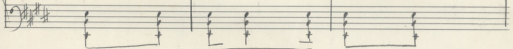
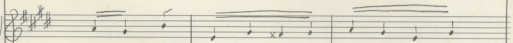
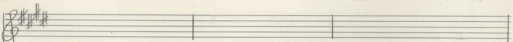
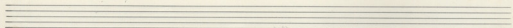
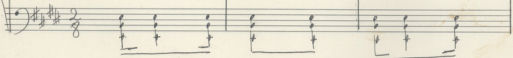
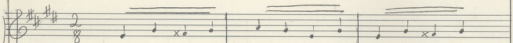
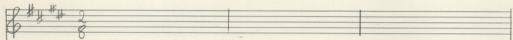
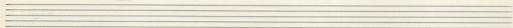
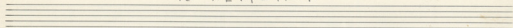


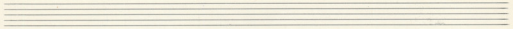
Opus 2

TO TEPIZTEPI

TO TEPIZTEPI.

ΤΟ ΠΕΡΙΣΤΕΡΙ.

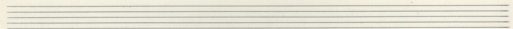
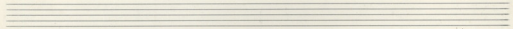




Handwritten musical notation for the first system, including a vocal line with lyrics and a piano accompaniment. The lyrics are:

To tis pi se pi
 To mi vu kai zav
 To tis pi se pi

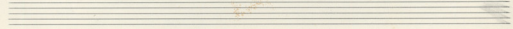
Handwritten musical notation for the piano accompaniment of the first system, showing chords and melodic lines.



Handwritten musical notation for the second system, including a vocal line with lyrics and a piano accompaniment. The lyrics are:

Tis - za se mi to kai vi
 phi - zi no to e xa ve
 e - fu ye kai zav e sa

Handwritten musical notation for the piano accompaniment of the second system, showing chords and melodic lines.



Izo ozo - ka
 ye zo - sei
 Kpu ope - ro

kie ye pe pai ru
 Kwa, de zo do zo
 To nvi ye zo pa

Handwritten musical notation for the first system. The vocal line is in G major (one sharp) and 4/4 time. The lyrics are written below the notes. The piano accompaniment consists of chords in the left hand.

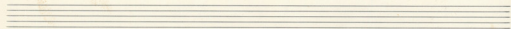
Lyrics:
 pa xa pas pi zo kw va
 ps xa pa pi yi se of ra
 n' n'po a'zi d'zo e' x'ra pa

Handwritten musical notation for the second system, continuing the vocal line and piano accompaniment from the first system.

Handwritten musical notation for the third system. The vocal line is in G major and 4/4 time. The lyrics are written below the notes. The piano accompaniment consists of chords in the left hand.

Lyrics:
 pi zis e gmas
 n'po pro' e' sei
 zia va pi d'ra

Handwritten musical notation for the fourth system, continuing the vocal line and piano accompaniment from the third system.



Musical notation for the first system, including a vocal line with lyrics and a piano accompaniment line.

Koi zo ju yu pw
Tov Tio vo sep vi
Tioe pa na ju se

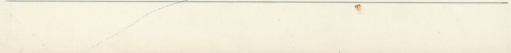
Musical notation for the second system, including a vocal line and a piano accompaniment line.

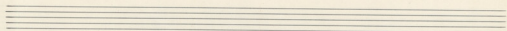


Musical notation for the third system, including a vocal line with lyrics and a piano accompaniment line.

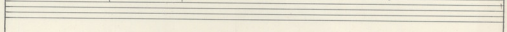
yu pw ju va sw xa po dw
se p vi se p vi vi sw zov da pai ps
pe pe pe pe pe pou xa pa Tioe

Musical notation for the fourth system, including a vocal line and a piano accompaniment line.

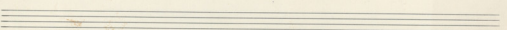
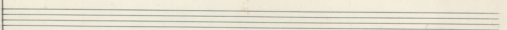
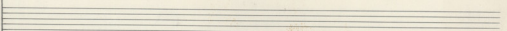
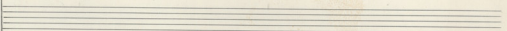
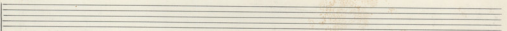
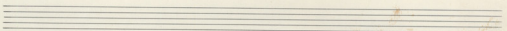
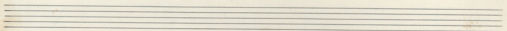




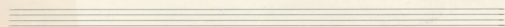
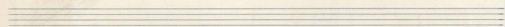
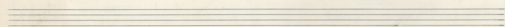
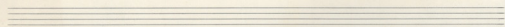
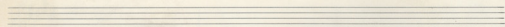
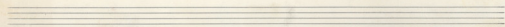
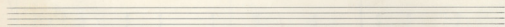
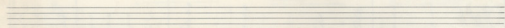
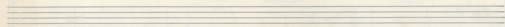
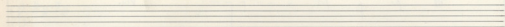
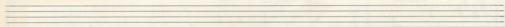
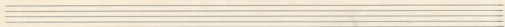
Handwritten musical notation on a single staff with lyrics in a non-Latin script. The notation includes a treble clef, a key signature of two sharps (F# and C#), and a 3/8 time signature. The lyrics are: 6 - pa | ud | ja | ka re | ji | te ri | ke | da | ku.



Handwritten musical notation on two staves. The upper staff is in treble clef with a 3/8 time signature. The lower staff is in bass clef with a 3/8 time signature. The notation includes notes, rests, and bar lines.



TO THE EDITOR



Αρμόδια 2

Η ΔΙΚΗΣΟΥ ΚΑΡΔΙΑ.

Η ΔΙΚΗΣΟΥ ΚΑΡΔΙΑ.

Handwritten musical score for the first system. The top staff is a treble clef with a key signature of two sharps (F# and C#) and a 9/8 time signature. The melody consists of quarter and eighth notes. Below the staff, the lyrics are written in Greek: "Τὴ ψαλὶ σὺ μετ' ἡμῶν - καρδία". The bottom staff is a bass clef with a key signature of two sharps, showing a simple harmonic accompaniment with chords and stems.

Handwritten musical score for the second system. The top staff continues the melody from the first system. The lyrics are: "καὶ εἰ κω σὲς εἰ χε - - - - - ρα καὶ τὴ σου μετ' ἡμῶν σου - - - - - σου". The bottom staff continues the harmonic accompaniment with chords and stems.

Η ΑΙΚΗΤΟΥ ΚΑΡΔΙΑ

Requiem

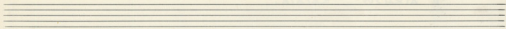
Του ουρα του ουρα ουρα -- πια κι ης καρδης ερω -- θυμω

Requiem

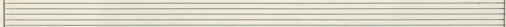
Requiem

κι ης καρδια ουρα -- πια κι ης καρδης ερω -- θυμω

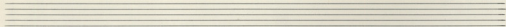
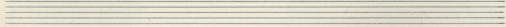
Requiem



Handwritten musical notation in treble clef, key signature of two sharps (F# and C#), and 2/4 time signature. The melody consists of quarter notes and rests. The lyrics are written below the notes: "π'αε γω παρ τὰ μα ἰ - - ττα".

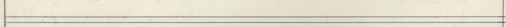


Handwritten musical notation in treble and bass clefs, key signature of two sharps, and 2/4 time signature. The treble staff contains a melody with quarter notes and rests. The bass staff contains a harmonic accompaniment with chords and stems.



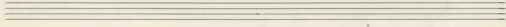
ΟΡΧΗΣΤΡΑ

Handwritten musical notation in treble clef, key signature of two sharps, and 2/4 time signature. The staff contains a series of rests, indicating a silent section for the orchestra.



ΟΡΧΗΣΤΡΑ.

Handwritten musical notation in treble and bass clefs, key signature of two sharps, and 2/4 time signature. The treble staff contains a melody with quarter notes and rests. The bass staff contains a harmonic accompaniment with chords and stems.



2

Παιρνευ ν'α σερνι λαρωρο
 ετ' πινα το προσιρρευ
 εχ'ωρα τον ηχο να ερω
 Ταγυ να που τον φερει

3

Καβαλα να για λυριχα
 λει οίκανο να τωρε
 κραγυ και π'ι παρ'ι φωρυ
 Καρδα να αω ες χ'ιγες

