

SE NON SI POSSONO

O AHO

Messa Giochi Op. 33 n. 84

Handwritten text at the top of the page, possibly a title or instruction, including the word "Korallen" and some illegible characters.



Handwritten text at the bottom of the page, possibly a signature or date, including the word "Korallen" and some illegible characters.



Siwé a'fjo k'opo au' g'ni n'g'g' ↑

K'ota bi j'p'p'j' o'u'w'p'o ↑ ↑

K'ota bi j'p'p'j' o'u'w'p'o ki a'w'p'o a'w'p'o a'w'p'o X a'w'p'o ↑ ↑ ↑ ↑

K'oi a' j'p'p'p'p'p' i' p'p'p'p'p' a'u' a'u' k'op'a p'p'p' p'p'p' p'p'p' ↑ ↑ ↑ ↑

E' a'w'p'o p'p'p'p'p'p' p'p'p'p'p'p'p' a'w'p'o a'w'p'o a'w'p'o a'w'p'o ↑ ↑ ↑ ↑

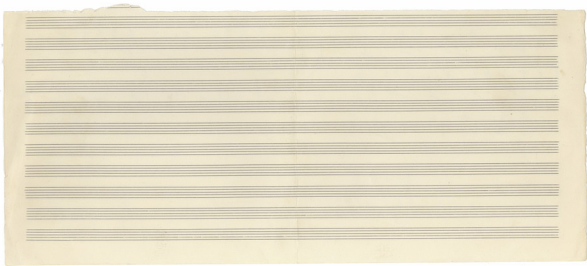
a'w'p'o p'p'p'p'p'p'p' ↑ ↑



Handwritten musical notation on three staves. The first staff contains a melodic line with a treble clef, a key signature of one flat, and a common time signature. The second staff contains a bass line with a treble clef. The third staff contains a bass line with a treble clef and a common time signature. The notation includes various note values, rests, and bar lines.

Handwritten musical notation in blue ink on two staves. The first staff shows a treble clef, a key signature of one flat, and a common time signature. The second staff shows a treble clef, a key signature of one flat, and a common time signature. The notation includes various note values and rests.

Lisa Brown  
 No. 1001  
 April 1965



8<sup>+</sup> *Mi* *mi* *se* *mi* *se* *Selma* *mi*

*la* *mi* *se* *la* *mi* *se*

*se* *se* *la* *se* *mi* *se* *mi*

*mi* *mi* *se* *se* *mi* *mi* *se* *se* *mi* *mi*

Γιάννης Γαλανός (Καθ.)  
Παύλος Παπαδόπουλος  
1960

*mi* *mi* *se* *se* *mi* *mi* *se* *se* *mi* *mi*

*mi* *mi* *mi* *se* *se* *se* *se* *se* *se* *se*

*se* *mi* *se* *mi* *se* *mi* *mi* *mi* *mi* *la*

*se* *se* *se* *se* *se* *mi* *la* *se* *mi* *la*

*se* *se* *se* *se* *se* *mi*





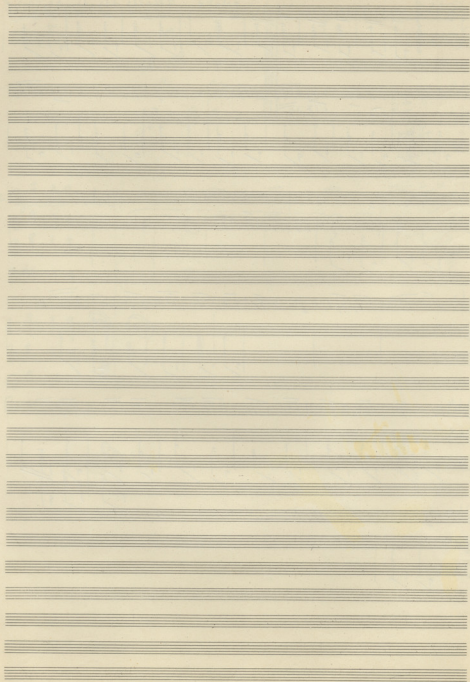
VI = (8)

2cl f  
 ob f  
 cl = 2 q  
 2lm q  
 fgra B q  
 7. d. Page

4 +

piz 8 f q q 1  
 cl 8 q q q  
 ob 8 f q q  
 8 8 q 1 q  
 8 8 f q q  
 8 8 f q q  
 8 8 q q q

do ten 2/4 | 1 | 1 |



♩ = 96

A handwritten musical score on aged paper, consisting of ten systems of staves. Each system includes a grand staff (treble and bass clefs) and a single staff for violin or viola. The music is written in a style characteristic of the late 19th or early 20th century. The first system begins with a tempo marking of quarter note = 96. The notation includes various rhythmic values, accidentals, and dynamic markings. There are some annotations in the fourth system, with circled words that appear to be "cresc." and "dim.". The paper shows signs of age, including yellowing and some staining.

20th. 20th. 20th.  
 20th. 20th. 20th.  
 20th. 20th. 20th.  
 20th. 20th. 20th.  
 20th. 20th. 20th.

Am po kapadukya  
 Xpist po kapadukya  
 Xpist po Xpist po  
 Xpist po Xpist po

20th Xpist po kapadukya  
 20th Xpist po kapadukya  
 20th Xpist po kapadukya  
 20th Xpist po kapadukya

20th Xpist po kapadukya  
 20th Xpist po kapadukya  
 20th Xpist po kapadukya  
 20th Xpist po kapadukya

Handwritten musical notation on a single staff with treble clef and a key signature of one sharp (F#). The notation includes various rhythmic values and accidentals.

**RETRORUM**

Handwritten musical notation on multiple staves. The notation is dense and includes various rhythmic values and accidentals. There are some circled annotations and a large arrow pointing to the right.

19-1-11

1. In lagu ini berawal, pertama kali  
 dan kuno-kuno  
 ke di bagian bawah, kawatnya di  
 tabung dan pertama ①

2. In lagu ini berawal, pertama kali  
 dan kuno-kuno  
 ke di bagian bawah, kawatnya di  
 tabung dan pertama ②

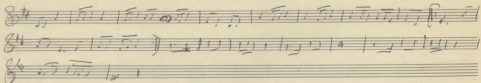
3. In lagu ini berawal, pertama kali  
 dan kuno-kuno  
 ke di bagian bawah, kawatnya di  
 tabung dan pertama ③

4. In lagu ini berawal, pertama kali  
 dan kuno-kuno  
 ke di bagian bawah, kawatnya di  
 tabung dan pertama ④

5. In lagu ini berawal, pertama kali  
 dan kuno-kuno  
 ke di bagian bawah, kawatnya di  
 tabung dan pertama ⑤

6. In lagu ini berawal, pertama kali  
 dan kuno-kuno  
 ke di bagian bawah, kawatnya di  
 tabung dan pertama ⑥

KAWAT



Viol  
Vcl  
Pik B

Do Do Do Do Sol 2 re

Viol  
Vcl  
Pik B

Sol<sup>7</sup> Do Do Do Do Fa Do Do

Pik B

Do Sol Do Do Do Do Sol Do Fa Do

Do Do Sol Do Do

Viol  
Vcl

Dot. Dot. 2 2 Sol Dot. 2 2 Sol Do

Viol  
Vcl

Dot. Dot Sol Dot Sol Dot Sol Do

ΕΙΧΑ ΦΟΥΤΕΥΕΙ ΜΙΑ ΚΑΡΔΙΑ

*M. K. K...*

(A)

Violini 8/8 9 | 9 | *[Musical notation]* | *[Musical notation]* | *[Musical notation]* | *[Musical notation]* | *[Musical notation]*

P.K. 2 Do, Do Do Do re re

B *[Musical notation]*

Viol. *[Musical notation]*

P.K. mi re Do sol! Do Do ~~Do~~ Do Do

B *[Musical notation]*

*[Musical notation]*

Fluti *[Musical notation]*

Viol. *[Musical notation]*

Viol. *[Musical notation]*

B.K. B Do FA sol sol mi la re

Fluti *[Musical notation]*

Viol. *[Musical notation]*

Viol. *[Musical notation]*

P.K. P. sol Do FA - sol Do Do FA sol

Fluti *[Musical notation]*

Viol. *[Musical notation]*

Viol. *[Musical notation]*

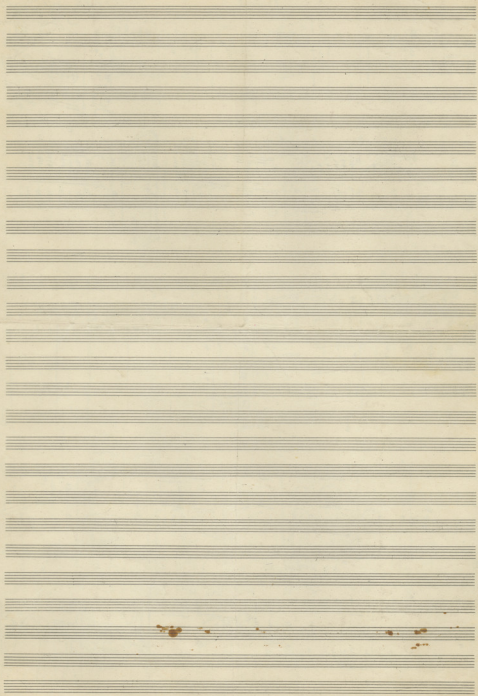
P.K. mi la re sol - Do

Xor *[Musical notation]*

Oex *[Musical notation]*

*[Musical notation]*





S

X

MURTA

M. Kelpa and  
J. Nagy  
J. Nagy

Handwritten musical score for the first system, featuring:

- Maracas & Xylophon
- Violin
- Vocal

The score includes rhythmic notation and melodic lines for each instrument.

Handwritten musical score for the second system, featuring:

- Violin
- Vocal
- Piano

The vocal line includes the lyrics "Do Do Do Do Sa la re".

Handwritten musical score for the third system, featuring:

- Piano
- Violin
- Vocal
- Pk B

The vocal line includes the lyrics "Do Do Do Sa la re".

Handwritten musical score for the fourth system, featuring:

- Piano
- Violin
- Vocal
- Pk B

The vocal line includes the lyrics "Do Fa Sa Su Do Su Do Su Do Sa re Do".

Handwritten musical score for the fifth system, featuring:

- Piano
- Violin
- Vocal
- Pk B

The vocal line includes the lyrics "Do Fa Do Sa re Do Sa re Do Sa".

MS 29

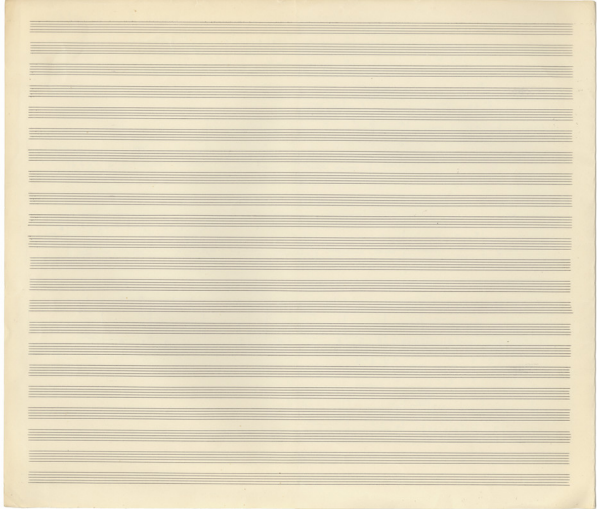
Handwritten musical notation on a grand staff. The system begins with a treble clef, a key signature of one flat (B-flat), and a 6/8 time signature. The music consists of several measures with complex rhythmic patterns, including sixteenth and thirty-second notes. There are some annotations above the staff, including the word "Poco" and some scribbled-out notes.

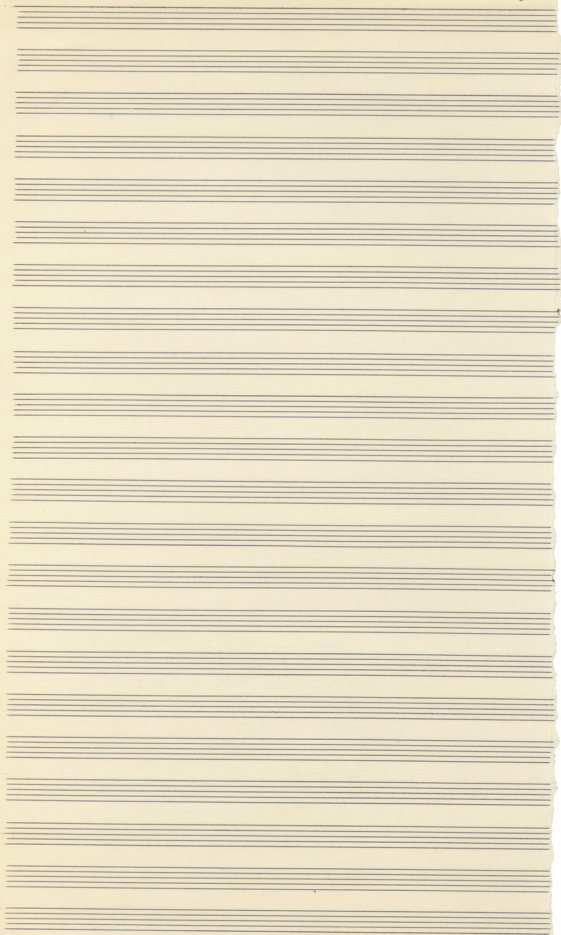
Handwritten musical notation on a grand staff. This system continues the piece with more complex rhythmic figures. A large, decorative flourish or ornament is written above the staff in the middle of the system. The notation includes various note values and rests.

Handwritten musical notation on a grand staff. A significant portion of this system is crossed out with a large 'X', indicating that the original notation was likely discarded or revised. The visible parts show rhythmic patterns similar to the previous systems.

Handwritten musical notation on a grand staff. This system shows a continuation of the rhythmic and melodic ideas, with clear notation for notes and rests. The time signature remains 6/8.

Handwritten musical notation on a grand staff. The final system on the page shows the concluding measures of the piece, with some notes and rests clearly defined.





Handwritten musical notation on a single staff, featuring a treble clef and a key signature of one flat. The notation includes a series of notes with stems and beams, some marked with accents. Below the staff, there are markings for "S. 2" and "L. 1".

Handwritten musical notation on a single staff, featuring a treble clef and a key signature of one flat. The notation includes a series of notes with stems and beams, some marked with accents. Below the staff, there are markings for "S. 2" and "L. 1".

Handwritten musical notation on a five-line staff. The key signature has one flat (Bb) and the time signature is 3/4. The melody consists of eighth and sixteenth notes. Below the staff, there are several lines of handwritten text in a cursive script, likely lyrics or performance instructions.

Handwritten musical notation on a five-line staff, starting with a treble clef and a key signature of one flat. It appears to be a short melodic fragment or a specific instruction.

Handwritten musical notation on a five-line staff in 3/4 time with one flat. The melody is written in a cursive style. Below the staff, there are several lines of handwritten text.

Handwritten musical notation on a five-line staff in 3/4 time with one flat. The melody continues with eighth and sixteenth notes. Below the staff, there are several lines of handwritten text.

Handwritten musical notation on a five-line staff in 3/4 time with one flat. The melody is written in a cursive style. Below the staff, there are several lines of handwritten text.

Handwritten musical notation on a five-line staff in 3/4 time with one flat. The melody is written in a cursive style. Below the staff, there are several lines of handwritten text.

Handwritten musical notation on a five-line staff in 3/4 time with one flat. The melody continues with eighth and sixteenth notes. Below the staff, there are several lines of handwritten text.

Handwritten musical notation on a five-line staff in 3/4 time with one flat. The melody is written in a cursive style. Below the staff, there are several lines of handwritten text.

Handwritten musical notation on a five-line staff in 3/4 time with one flat. The melody continues with eighth and sixteenth notes. Below the staff, there are several lines of handwritten text.

Handwritten musical notation on a five-line staff in 3/4 time with one flat. The melody is written in a cursive style. Below the staff, there are several lines of handwritten text.

STANDA - 18 SPART

8

1 2 3 4 5 6 7 8 9 10 11 12 13 14 15 16 17 18 19 20

8



Handwritten musical notation on a single staff, featuring a treble clef and a key signature of one sharp (F#). The notation includes various rhythmic values and rests.

Handwritten musical notation on two staves. The top staff begins with a treble clef and a key signature of one sharp. The bottom staff begins with a bass clef and a key signature of one sharp. The notation is dense with notes and rests.

Handwritten musical notation on a single staff, featuring a treble clef and a key signature of one sharp. The notation includes various rhythmic values and rests.

Handwritten musical notation on a single staff, featuring a treble clef and a key signature of one sharp. The notation includes various rhythmic values and rests.

Il y a un grand air  
 qui est très agréable  
 et qui est très agréable  
 et qui est très agréable

Handwritten musical notation for the first system, featuring a treble and bass clef with various notes and rests. Circled numbers 1 through 8 are placed above the staff.

Handwritten musical notation for the second system, including a treble and bass clef. Circled numbers 1 and 2 are above the staff.

Satbanich Satobk ez ni-za mi

Handwritten musical notation for the third system, consisting of two staves with treble and bass clefs, showing a complex melodic and harmonic structure.

Handwritten musical notation for the fourth system, featuring a treble and bass clef with a few notes.

Handwritten musical notation on a single staff, featuring rhythmic patterns and notes.

**H MYPTIA**

Handwritten musical notation with lyrics: *Въ нѣмъ живи мѣсяцъ въ нѣмъ*

Handwritten musical notation with lyrics: *въ нѣмъ живи мѣсяцъ въ нѣмъ*

Handwritten musical notation with lyrics: *въ нѣмъ живи мѣсяцъ въ нѣмъ*

Handwritten musical notation with lyrics: *въ нѣмъ живи мѣсяцъ въ нѣмъ*

Multiple empty musical staves on the page.

MEYASORAN TRADISI

This is a handwritten musical score on aged paper, titled "MEYASORAN TRADISI" in red ink at the top. The score is written in a system of five staves, each containing a grand staff (treble and bass clefs). The music is in 2/4 time, as indicated by the time signature at the beginning of the first staff. The notation includes various rhythmic values such as eighth and sixteenth notes, rests, and bar lines. The first staff begins with a treble clef and a key signature of one flat (B-flat). The subsequent staves continue the melodic and harmonic development. The fourth staff features a circled letter 'A' above the first measure of a new section. The score concludes with a double bar line and repeat dots at the end of the fifth staff. The handwriting is clear and legible, typical of a composer's manuscript.

THE SONG

EIXA QURUBI AND KARDOM

Handwritten musical notation for the first system, including a treble clef, a bass clef labeled "Guitar", and a common time signature. The notation includes various rhythmic values and accidentals.

Handwritten musical notation for the second system, featuring a grand staff with treble and bass clefs. It includes a key signature change to one sharp (F#) and a time signature change to 3/4. The lyrics "in LA RE in LA RE" are written below the notes.

Handwritten musical notation for the third system, continuing the grand staff notation. It includes a key signature change to one flat (Bb) and a time signature change to 3/4. The lyrics "in LA RE in LA RE" are repeated.

Handwritten musical notation for the fourth system, continuing the grand staff notation with various rhythmic patterns and accidentals.

Handwritten musical notation on a five-line staff. The key signature has one flat (B-flat). The notation includes various rhythmic values and rests. A circled '10' is written above the first few notes.

Handwritten musical notation on a five-line staff. A circled '11' is written above the first few notes. The notation includes various rhythmic values and rests.

Handwritten musical notation on a five-line staff. A circled '241' is written above the first few notes. The notation includes various rhythmic values and rests.

Handwritten musical notation on a five-line staff. A circled '242' is written above the first few notes. The notation includes various rhythmic values and rests.

Handwritten musical notation on a five-line staff. Above the staff, there are several labels with circled numbers: *flauto Piccolo* (2), *oboe Clarinetto* (3), *Mandolino* (2), *Mandragola XVII<sup>o</sup> Secolo* (1), *Vcllo* (4), *Violoncello* (4), and *Organo* (4). The notation includes various rhythmic values and rests.

Handwritten musical notation on a five-line staff. The notation includes various rhythmic values and rests.

Handwritten musical notation on a five-line staff. The notation includes various rhythmic values and rests.

Handwritten musical notation on a five-line staff. The notation includes various rhythmic values and rests.

Handwritten musical notation on a five-line staff. The notation includes various rhythmic values and rests.

Handwritten musical notation on a five-line staff. The notation includes various rhythmic values and rests.