

Ο ΚΑΒΑΛΑΡΗΣ

0 ΚΑ ΒΑ ΛΛ Α Ρ Η Σ.

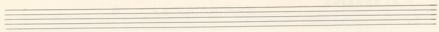
0 Ka Ba ja pas Tou pa vou
 0 Ka Ba ja pas Tou Bou rou
 0 Ka Ba ja pas Tou pa vou

Ga vm ke Tta vw ctm kop phi kra za cto
 ga vm ut cta Io na - uia kra za cto
 φερ vi μα zi του των αυ γι φερ vi zo

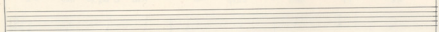
Ο ΚΑΒΑΛΑΡΗΣ.

XE pi tuv - au x4. Kai eay go ku tu
 Xe pi KE - pau pou Kai eay go A ta
 Xe pi Tsv - eap ad Kai e'ay go Tsv DE

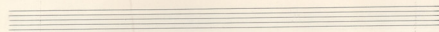
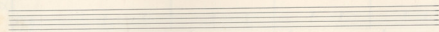
n ee ray pou mei To Ta 2 n
 pi



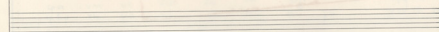
Handwritten musical notation in G-clef with lyrics: Ká pi to pa jn ud pi



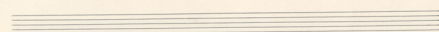
Handwritten musical notation for piano accompaniment, including treble and bass clefs with chords and notes.



Handwritten musical notation in G-clef with lyrics: oa p du zo upa du oza E



Handwritten musical notation for piano accompaniment, including treble and bass clefs with chords and notes.



YHR Ben Da xpi cte Kau Ma va

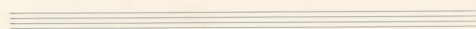
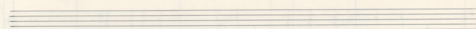
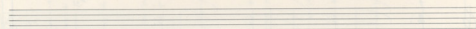
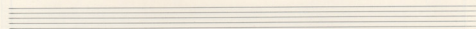
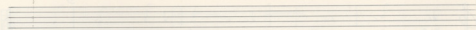
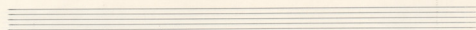
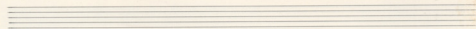
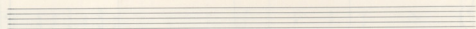
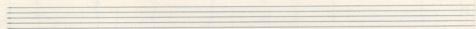
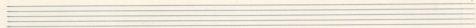
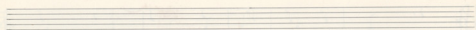
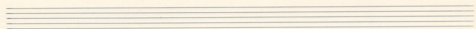
This system contains a vocal line in treble clef and a piano accompaniment in bass clef. The vocal line consists of eight measures with lyrics: YHR, Ben, Da, xpi, cte, Kau, Ma, va. The piano accompaniment features chords in the right hand and rests in the left hand for the first three measures, followed by chords in the last three measures.

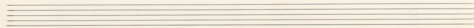
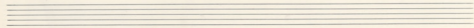
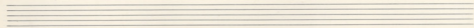
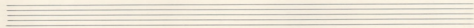
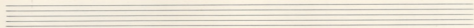
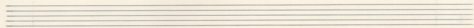
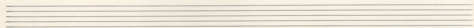
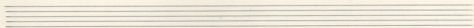
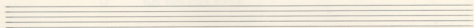
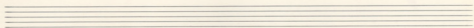
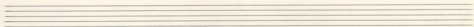
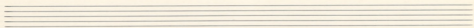
Two empty musical staves, one in treble clef and one in bass clef.

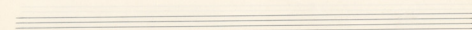
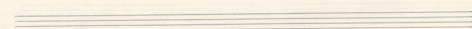
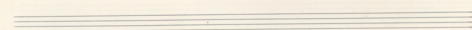
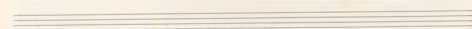
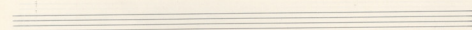
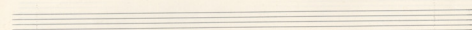
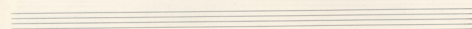
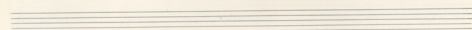
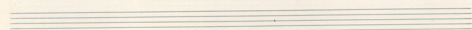
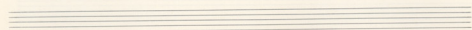
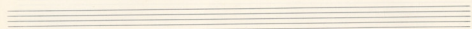
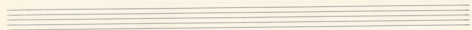
ria

FIN.

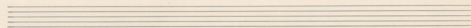
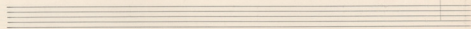
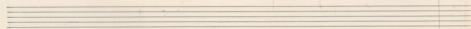
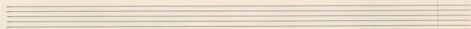
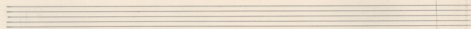
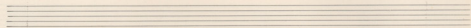
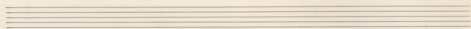
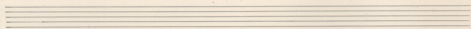
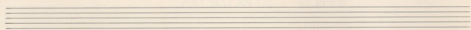
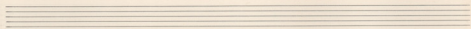
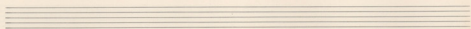
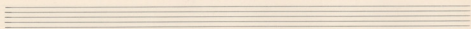
This system contains a vocal line in treble clef and a piano accompaniment in bass clef. The vocal line has five measures, with the word 'ria' under the first measure. The piano accompaniment has five measures of chords in the right hand and chords in the left hand. The system concludes with a double bar line and the word 'FIN.' in the bass clef staff.



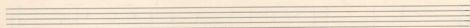
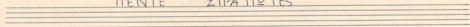




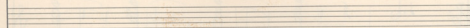
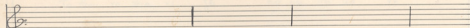
ΠΕΝΤΕ ΣΤΡΑΤΙΩΤΕΣ.



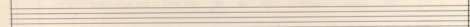
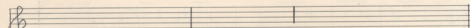
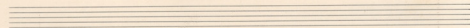
TENTE ΣΤΡΑΤΙΩΤΕΣ



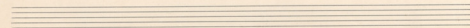
S



A system of two musical staves. The upper staff has a treble clef and contains a melody: quarter note G4, eighth notes A4-B4, quarter note C5, quarter note B4, quarter note A4, quarter note G4, quarter note F4, quarter note E4, quarter note D4. The lower staff has a bass clef and contains a bass line: two chords of two eighth notes each (F4-G4 and F4-G4), two chords of two eighth notes each (F4-G4 and F4-G4), two chords of two eighth notes each (F4-G4 and F4-G4), and two double bar lines. A brace on the left side connects the two staves.



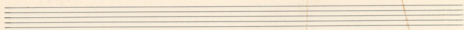
A system of two musical staves. The upper staff has a treble clef and contains a melody: quarter note G4, eighth notes A4-B4, quarter note C5, quarter note B4, quarter note A4, quarter note G4, quarter note F4, quarter note E4. The lower staff has a bass clef and contains a bass line: two chords of two eighth notes each (F4-G4 and F4-G4), two chords of two eighth notes each (F4-G4 and F4-G4), and two double bar lines. A brace on the left side connects the two staves.



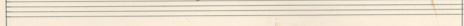
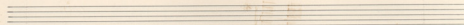
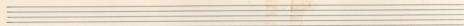
Handwritten musical score for the first system. It consists of a vocal line in the upper staff and a piano accompaniment in the lower staff. The vocal line begins with a treble clef and a key signature of one flat. The piano accompaniment starts with a bass clef and a key signature of one flat. The music is written in a style typical of early 20th-century manuscript notation.

Handwritten musical score for the second system, including lyrics and piano accompaniment. The vocal line is in the upper staff, and the piano accompaniment is in the lower staff. The lyrics are written below the vocal line.

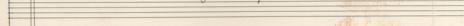
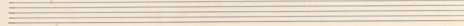
Te ves Ipa zu w oos t je u ru da ve
Te vi Ipa zu w zos Koi pu Du ua ve
Te ves Ipa zu w zos di ee ju Du ua ve



To Dou vo ra Ba yav si ue vi ca ve
 To Dou vo zai's zpu e ka pu du ua ve.
 To Dou ve xia vi je ka ju du ua ve.

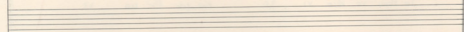



To Dou vo To Ba yav Iia pa em sa ve
 To Dou vo Tou's kw vi di a ju du ua ve
 To Dou ve Ica va je a pa em du ua ve.

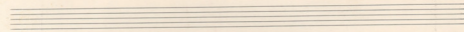
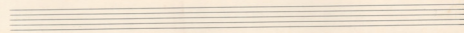





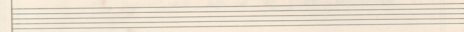
Musical staff with lyrics: Man va Man va Man va Man va TE VEE



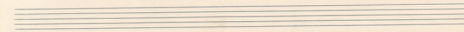
Musical staff with chords and bass line

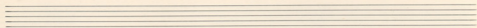


Musical staff with lyrics: Man ves Man ves Man you JES TE VEE Man ves

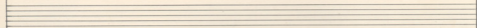


Musical staff with chords and bass line





Musical notation for a vocal line in G-clef. The lyrics are: *Ma-ri-ae Ma-ri-ae Je-su*. The notes are: G4 (quarter), A4 (quarter), B4 (quarter), G4 (quarter), F#4 (quarter), E4 (quarter), D4 (quarter), C4 (quarter), B3 (quarter), A3 (quarter), G3 (quarter), F#3 (quarter), E3 (quarter), D3 (quarter), C3 (quarter), B2 (quarter), A2 (quarter), G2 (quarter).



Musical notation for piano accompaniment. The right hand is in G-clef and the left hand is in C-clef. The right hand plays chords: G2-A2-B2, A2-B2-C3, B2-C3-D3, G2-A2-B2, A2-B2-C3, B2-C3-D3, G2-A2-B2, A2-B2-C3, B2-C3-D3, G2-A2-B2, A2-B2-C3, B2-C3-D3, G2-A2-B2, A2-B2-C3, B2-C3-D3, G2-A2-B2, A2-B2-C3, B2-C3-D3. The left hand plays chords: G2-A2-B2, A2-B2-C3, B2-C3-D3, G2-A2-B2, A2-B2-C3, B2-C3-D3, G2-A2-B2, A2-B2-C3, B2-C3-D3, G2-A2-B2, A2-B2-C3, B2-C3-D3, G2-A2-B2, A2-B2-C3, B2-C3-D3, G2-A2-B2, A2-B2-C3, B2-C3-D3. There are double bar lines in the left hand for measures 4, 5, and 6.

