

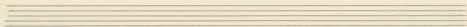
ΓΑ

ΤΟ ΠΑΛΛΗΚΑΡΙ

ТО ПАЛЛКАРІ

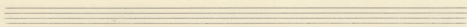
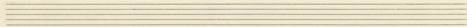
The first system of the handwritten musical score consists of three staves. The top staff is a single-line treble clef staff with a key signature of one flat (Bb) and a time signature of 3/4. It contains a double bar line followed by two empty measures. The middle staff is a treble clef staff with a key signature of one flat (Bb) and a time signature of 3/4. It contains three measures of music, each with a dotted quarter note followed by an eighth note, and a quarter note. The bottom staff is a bass clef staff with a key signature of one flat (Bb) and a time signature of 3/4. It contains three measures of music, each with a dotted quarter note followed by an eighth note, and a quarter note. A large bracket on the left side of the middle and bottom staves indicates they are part of a single melodic line.

The second system of the handwritten musical score consists of three staves. The top staff is a single-line treble clef staff with a key signature of one flat (Bb). It contains a double bar line followed by two empty measures. The middle staff is a treble clef staff with a key signature of one flat (Bb). It contains three measures of music, each with a dotted quarter note followed by an eighth note, and a quarter note. The bottom staff is a bass clef staff with a key signature of one flat (Bb). It contains three measures of music, each with a dotted quarter note followed by an eighth note, and a quarter note. A large bracket on the left side of the middle and bottom staves indicates they are part of a single melodic line.



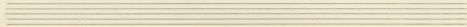
Handwritten musical notation in treble clef with lyrics. The lyrics are: "ve ve ve", "za za za", "zi ku zi", "vi ra za", "pa - ui oi", "le i", "gai", "sou", "khai", "wai", "gai", "sou", "khai".

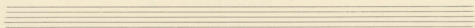
Handwritten musical notation in bass clef, including a double bar line and a key signature change to two flats.



Handwritten musical notation in treble clef, including a key signature change to two flats.

Handwritten musical notation in bass clef, including a key signature change to two flats.

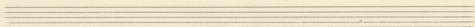
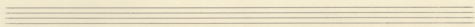




Handwritten musical notation in G major (one sharp) and 4/4 time. The melody is written on a treble clef staff. Below the staff are two lines of lyrics in Greek script.

Πά γη υά πλ σμ θου γηα ού σός εσ τη αση
 τη αση υά πλ σμ κεν τήα ού σός εσ τη αση
 τη αση υά πλ αλ να σου εσ γι τον υσ ούα

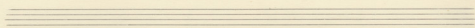
Handwritten musical notation for piano accompaniment. The right hand is on a treble clef staff and the left hand is on a bass clef staff. The music consists of chords and simple rhythmic patterns.



Handwritten musical notation in G major (one sharp) and 4/4 time. The melody is written on a treble clef staff. Below the staff are two lines of lyrics in Greek script.

υά πλ αλ γα γη υά σμ γη εσ υα πας
 υά πλ οί κα τήα γη υά σμ γη εσ υα πας
 καί πε τήα σμ γη εσ υα πας γη εσ υα πας

Handwritten musical notation for piano accompaniment. The right hand is on a treble clef staff and the left hand is on a bass clef staff. The music consists of chords and simple rhythmic patterns.



Handwritten musical notation for the first system. The vocal line is in G major (one flat) and 4/4 time. The lyrics are written below the notes. The piano accompaniment is in the bass clef.

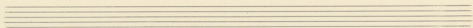
Lyrics:
ye fi ge - tav - zia
se va ve - kvu - pa
zei va ziv - ve - fia
KaV a oju ves zo'
Kav zov sa vi zo'
Te M pa va us

Handwritten musical notation for the second system, showing piano accompaniment for the first system. It consists of two staves: a treble clef staff and a bass clef staff.

Handwritten musical notation for the third system. The vocal line is in G major (one flat) and 4/4 time. The lyrics are written below the notes. The piano accompaniment is in the bass clef.

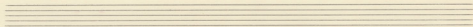
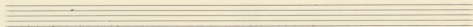
Lyrics:
xe pi sov Kie ho bes zo fi
o vi pa zoi H jo zo fi
pi pu se un ba jas lat pu
pa pi
pa pi Kav
pa En mio

Handwritten musical notation for the fourth system, showing piano accompaniment for the third system. It consists of two staves: a treble clef staff and a bass clef staff.



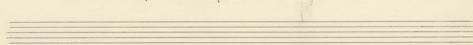
Handwritten musical notation with lyrics in Greek. The lyrics are: *ὁ ἅγιος πνεῦμα ἡμᾶς ἁγιάσει καὶ ἐπιθήσει ἐν ἡμῖν τὸ χάρισμα τῆς ἀγάπης καὶ τῆς εἰρήνης τοῦ πατρὸς καὶ τοῦ υἱοῦ τοῦ θεοῦ τοῦ πατρὸς ἀμήν*

Handwritten musical notation, including a bass line with a double bar line and a fermata.



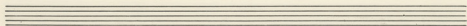
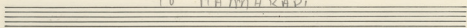
Handwritten musical notation with Roman numerals I and II. The lyrics are: *καὶ τῆς εἰρήνης τοῦ πατρὸς ἀμήν*

Handwritten musical notation with Roman numerals I and II, and a triplet of notes labeled 1, 2, 3.

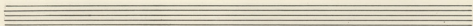


ΤΟ ΠΑΛΛΗΚΑΡΙ

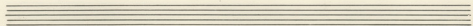
ТО ПАМНІКАРІ



Handwritten musical notation for the first system. It consists of three staves. The top staff is empty. The middle staff is a treble clef with a key signature of one flat (B-flat) and a 2/4 time signature. It contains a melody of eighth notes with slurs. The bottom staff is a bass clef with a key signature of one flat and a 2/4 time signature. It contains a bass line of eighth notes with slurs. A large handwritten 'Q' is on the left side of the system.

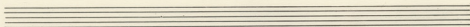
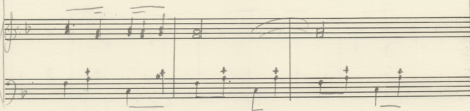
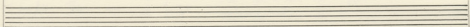
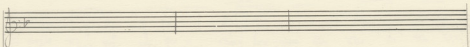
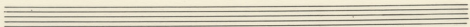
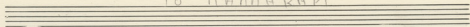


Handwritten musical notation for the second system. It consists of three staves. The top staff is empty. The middle staff is a treble clef with a key signature of one flat and a 2/4 time signature. It contains a melody of eighth notes with slurs. The bottom staff is a bass clef with a key signature of one flat and a 2/4 time signature. It contains a bass line of eighth notes with slurs. A large handwritten 'Q' is on the left side of the system.

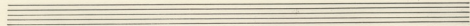


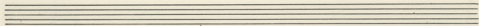
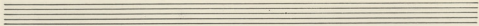
-2-

Το ΠΑΛΗΝΚΑΡΙ



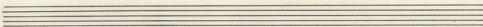
Κλαί	-----	+	σο	δι	εν	ζπον	Κλαί	-----
Μαται	-----	υε	οι	επα	-----	ζοι	Κλαί	-----
Κλαί	-----	υε	οι	Μαται	-----	ζοι	Κλαί	-----





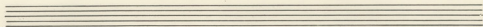
Handwritten musical notation with lyrics in Chinese characters. The lyrics are: 3a su ve pa -- u' i a' pi 201 600 K' lau; 3a ku ha za -- ai oi pi 201 600 K' lau; 3a ku ha za -- ai oi pi 201 600 K' lau.

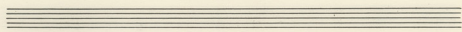
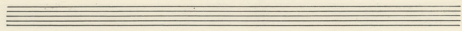
Handwritten musical notation with notes and rests on a staff.



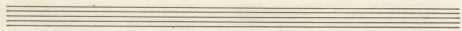
Handwritten musical notation with notes and rests on a staff.

Handwritten musical notation with notes and rests on a staff.

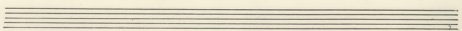


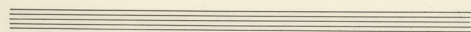
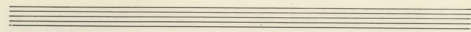


Tia un na pi ca sou xa ca Goi ci Tia Hn
 Tia un na pi ca xov nia ca Hev ci Tia Hn
 Tia un na pi Ma xov xov ca xi Xn de ca

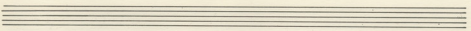


un pi mi xa pel uin pu ca via pu
 un pi oi wo wi xil k'ov cov Ga ve pa
 pa pa pa pa pa pa pa pa pa pa pa pa

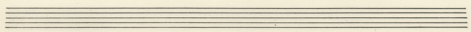


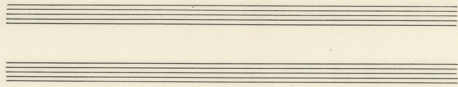


Ἰ.Ε. ἡμ. Ἰε - τίου - λια ἡ ἄνω νε ἰ
 Ἐ.ε. να νε - κρυ - φα ἡ τῶν ἁ
 τῶν να ἐν - νε - φῶν τῶν ἁ

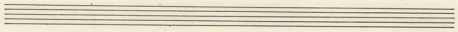


χε πὶ σου κ'ε κο δε εἰ φε ἡα --- πὶ ἰ
 ἰ νε πα νε ἡ το το φε ἡα --- πὶ καυ
 πὶ νε νε νε δε νε νε νε νε νε νε νε νε νε





G E uo ψι Ga xou tou do o xe pol hia - Nux -
 zu Ga εδν A ya uli zed eni Ba fa ve - tra
 Ημε Αηι Ε ωωω ποθ ου ut koud ηη εα γη - ε'



I	II
<p>zuq via</p>	<p>tra</p>
I	II
<p>1. 2. 3. :</p>	

