

ARKADIA 2 2

ARCADIA 2 2

ΣΤΟ ΠΑΖΑΡΙ ΤΟΥ ΦΟΝΙΑ

ΣΤΟ ΠΑΖΑΡΙ ΤΟΥ ΦΟΝΙΑ

ΜΠΑΔΑΝΤΕΣ.

Ποσειδών. Τον Μάγου (Γραφιστόν)
ΜΑΝΩ ΕΛΕΦΤΕΡΙΩ

Μουσ. — ΜΤ

ARCADIA N° 2

©

54/294 —

295 —

310 —

311 —

312 —

313 —

314 —

315 —

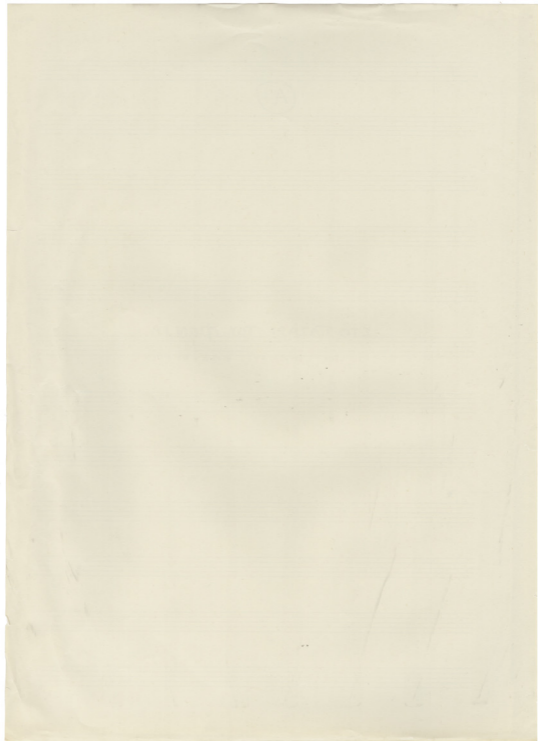
316 —

STO PASARI TOU FONIA

A

ΣΤΟ ΠΙΑΖΑΡΙ ΤΟΥ ΦΟΝΙΑ.

ΤΟΥ ΜΑΝΟΥ ΕΛΕΥΘΕΡΙΟΥ

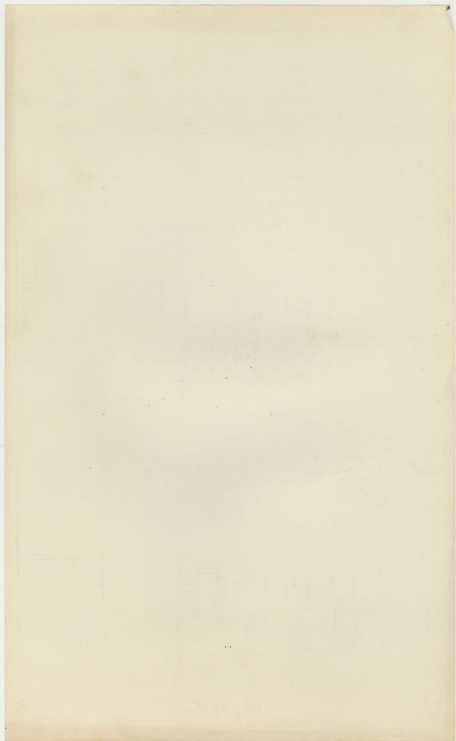


ΤΡΙΑ ΤΡΙΑΜΙΑ

Canto

Τρ. α τρ
 Τρ τρ

24/294



Musical staff with treble clef, key signature of two sharps (F# and C#), and common time signature. The melody consists of seven notes: quarter, quarter, quarter, quarter, quarter, quarter, and half note. The lyrics are written below the staff.

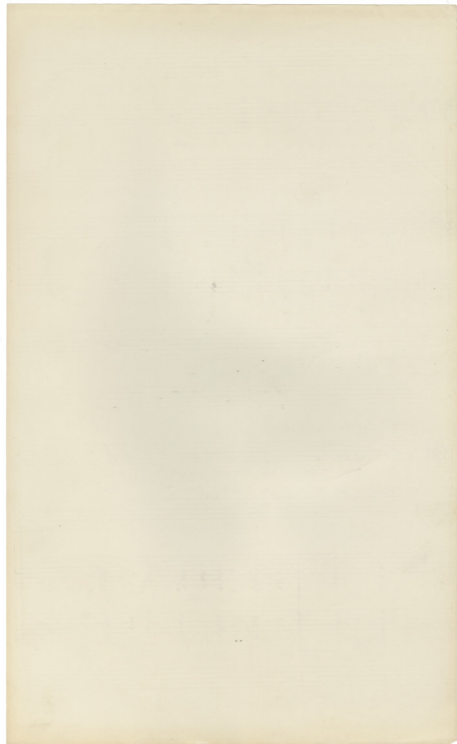
Kau kye pa vs zai Na sa kev
 Tpi a te pu pia wa zu sa

Two musical staves for accompaniment. The upper staff is in treble clef and the lower staff is in bass clef. Both are in the same key signature and time signature as the first system. The accompaniment consists of vertical chords, some with stems and some without, corresponding to the melody above.

Musical staff with treble clef, key signature of two sharps, and common time signature. The melody consists of seven notes: quarter, quarter, quarter, quarter, quarter, quarter, and half note. The lyrics are written below the staff.

Kau iwi pav zu xa pa - kev
 Kau zpi a va we pa - su

Two musical staves for accompaniment. The upper staff is in treble clef and the lower staff is in bass clef. Both are in the same key signature and time signature as the first system. The accompaniment consists of vertical chords, some with stems and some without, corresponding to the melody above.





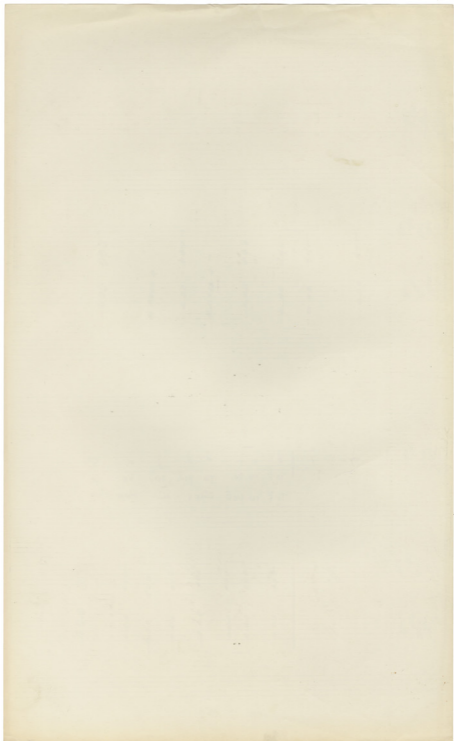
Handwritten musical notation consisting of several vertical stems with dots, representing chords or notes. The notation is spread across the three staves mentioned above.



τοῦ ναῦ το πῦρ ζαν ἔο γο
 Τοῦ να ποῦ ἄψις μιν ἄπ' οὐρα

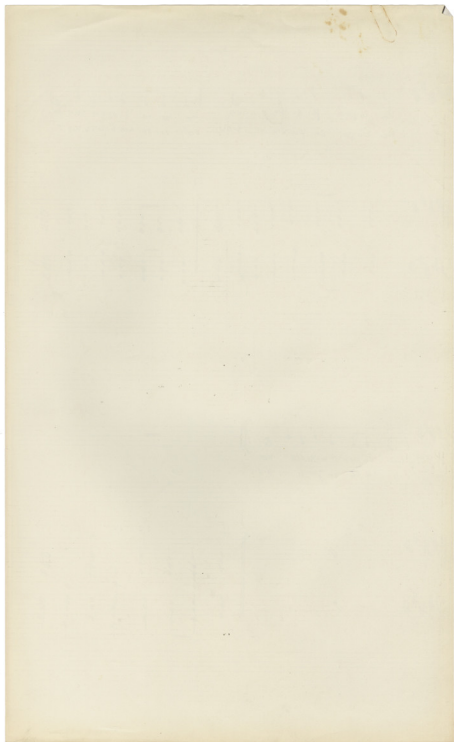


Handwritten musical notation consisting of several vertical stems with dots, representing chords or notes. The notation is spread across the two staves mentioned above.



και τ'αγαπ'α πιεπε - νο το τ'α το εσπε και πο'ς
 και τ'αγαπ'α ζιμωνι - που σιδ τ'α το δευτερευα με ου.

και τ'αγαπ'α μαρτιρι - νο
 ε τ'α το ζιμωνι - που



Handwritten musical notation for the first system, consisting of three staves. The top staff has a treble clef and a key signature of three sharps (F#, C#, G#), with a whole rest. The middle staff has a treble clef, the same key signature, and a double bar line. The bottom staff has a bass clef, the same key signature, and a double bar line. To the right of the middle and bottom staves, the word "VERBODEN" is written in a stylized, handwritten font.

2^{or}

НАРОД НА СВОЈИТ СРЕМНОС

Handwritten musical notation for the second system, consisting of two staves. The top staff has a treble clef and a key signature of three flats (Bb, Eb, Ab), with a circled "S" above it. The bottom staff has a bass clef and the same key signature, also with a circled "S" above it. The notation includes a whole note in the top staff and a series of eighth notes in the bottom staff, with a fermata over the final notes. A small "t" is written below the bottom staff.

С. М. М. 24/295

Handwritten musical notation for the first system. It consists of three staves. The top staff is in treble clef with a key signature of three sharps (F#, C#, G#). The middle and bottom staves are in bass clef with the same key signature. A double bar line with repeat slashes (//) is present on all three staves.

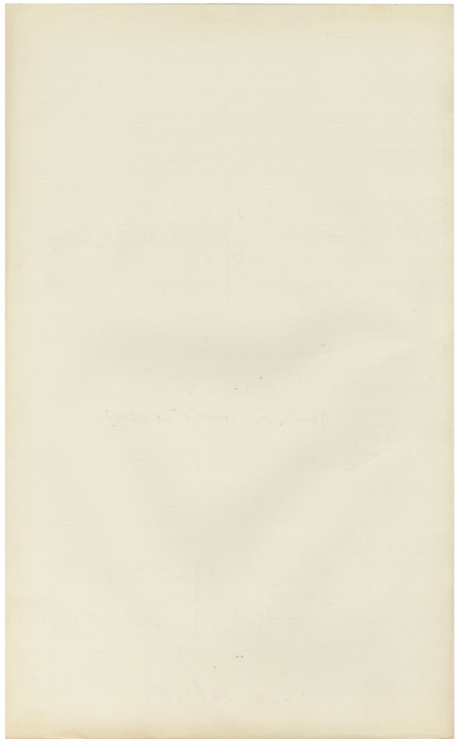
«VERBODEN»

2^{or}

НАРОД НА СВОИХ СРЪЦАМА

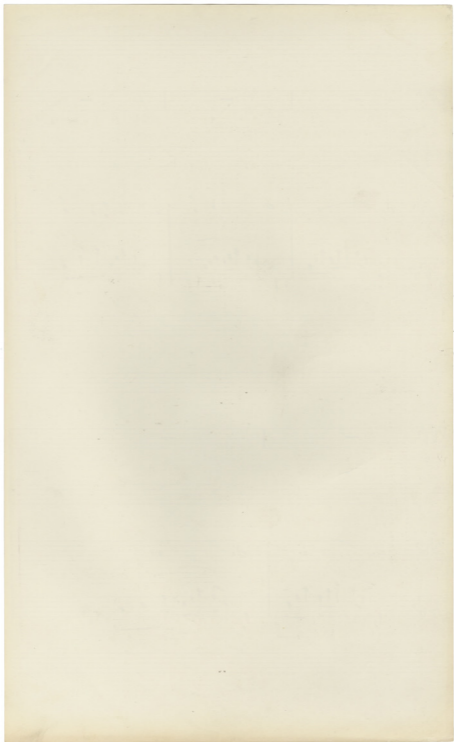
Handwritten musical notation for the second system. It consists of two staves. The top staff is in treble clef and the bottom staff is in bass clef, both with a key signature of three flats (Bb, Eb, Ab). There are circled 'S' markings above the first measure of each staff. The notation includes a double bar line and various rhythmic values.

С.М.Н. 54/295



Handwritten musical score for the first system. The system consists of two staves. The top staff is a treble clef with a key signature of two flats (Bb, Eb) and contains three measures of whole rests. The bottom staff is a bass clef with the same key signature and contains three measures of music. The first measure has a quarter note followed by a dotted quarter note. The second measure has a quarter note followed by an eighth note, a quarter note, and an eighth note. The third measure has a quarter note followed by an eighth note, a quarter note, and an eighth note. There are upward-pointing arrows under the first and second measures of the bass staff. To the right of the system, there are three vertically stacked numbers: 13, 2, and 0.

Handwritten musical score for the second system. The system consists of two staves. The top staff is a treble clef with a key signature of two flats (Bb, Eb) and contains three measures of music. The first measure has a quarter note followed by a dotted quarter note. The second measure has a quarter note followed by a dotted quarter note. The third measure has a quarter note followed by a dotted quarter note. The bottom staff is a bass clef with the same key signature and contains three measures of music. The first measure has a quarter note followed by a dotted quarter note. The second measure has a quarter note followed by an eighth note, a quarter note, and an eighth note. The third measure has a quarter note followed by an eighth note, a quarter note, and an eighth note.



Handwritten musical notation for the first system, featuring a vocal line and a piano accompaniment. The key signature is two flats (B-flat and E-flat), and the time signature is 4/4. A dynamic marking of *mf* is present above the staff. A fermata is placed over the first measure of the vocal line. The lyrics are written below the vocal staff.

mf

Na Dos pot do in ue xp̄m̄ ep̄os zai ca' aya
 Na ro san kai pu sou cro gi sto pai po
 Tiri ps zoi Nux za e xa p̄os Han zē ve

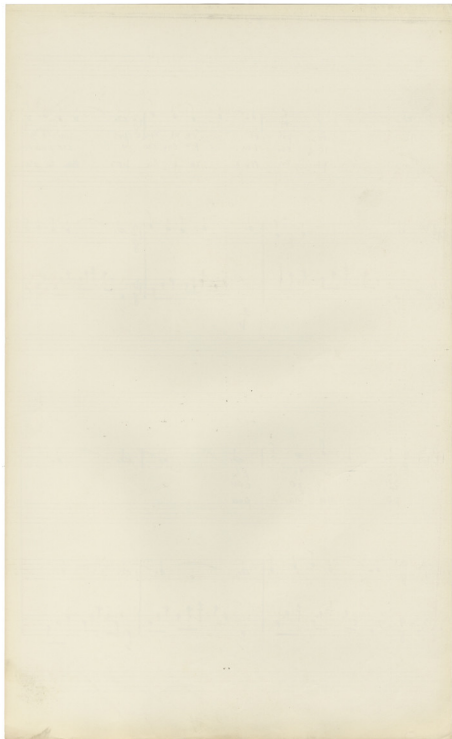
Handwritten musical notation for the second system, continuing the vocal and piano parts. The piano accompaniment includes a prominent bass line with a downward-pointing arrow under the first measure. The key signature and time signature remain consistent with the first system.

Handwritten musical notation for the third system, primarily consisting of the vocal line. The lyrics continue below the staff.

f

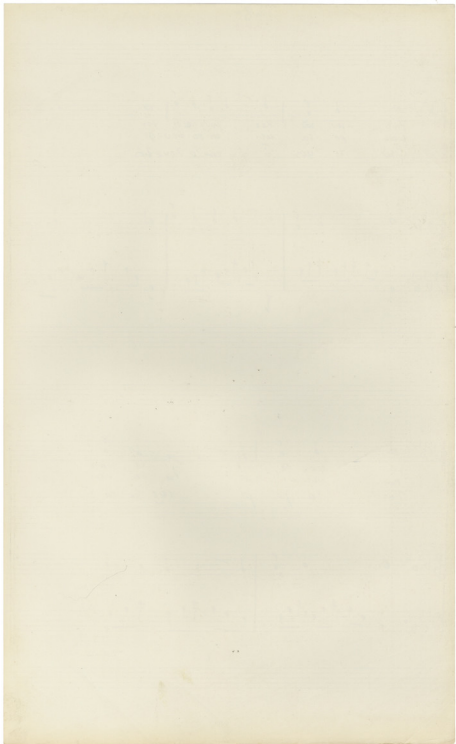
ca zo xe - pi
 za' zo yo - sou
 po Ma au - p̄sa

Handwritten musical notation for the fourth system, showing the vocal and piano parts. The piano accompaniment features a steady bass line with upward-pointing stems. The key signature and time signature are maintained.



Η. 8. σου τον καρ πορευσε τις
 παι, πο σοι μεν αν τα αυ τι
 ψει η υος η αν τα ο Χριστος

Η
 10
 8
 ην τα αυ τι αν τα ο Χριστος
 ην τα αυ τι αν τα ο Χριστος
 ην τα αυ τι αν τα ο Χριστος



Handwritten musical notation on a five-line staff with a treble clef and a key signature of three flats (B-flat, E-flat, A-flat). The notes are: a half note G4, a quarter note A4, a quarter note B4, a half note C5, a quarter note B4, a quarter note A4, and a half note G4. Below the staff, there are three lines of lyrics in Cyrillic script:

ко	са	уиав	и	се	та	—	то
ю	за	—	упв	то	—	—	то
ко	за	—	та	та	—	—	пи

Handwritten musical notation on a five-line staff with a treble clef and a key signature of three flats. The notes are: a half note G4, a quarter note A4, a quarter note B4, a half note C5, a quarter note B4, a quarter note A4, and a half note G4. Below the staff, there are three lines of lyrics in Cyrillic script:

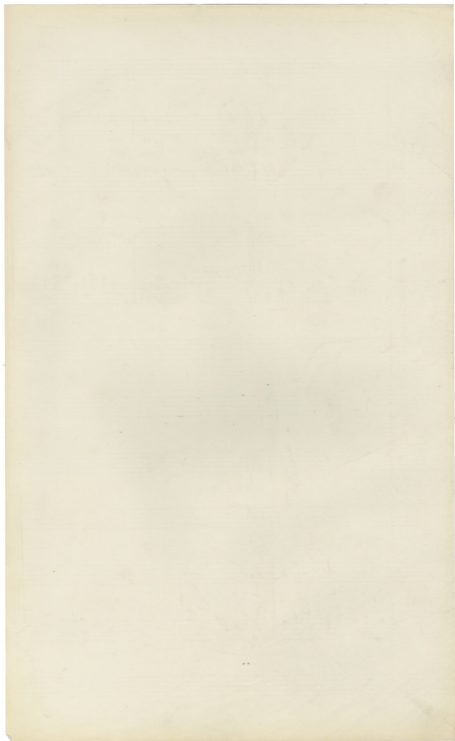
ко	са	уиав	и	се	та	—	то
ю	за	—	упв	то	—	—	то
ко	за	—	та	та	—	—	пи

Handwritten musical notation on a five-line staff with a treble clef and a key signature of three flats. The notes are: a half note G4, a quarter note A4, a quarter note B4, a half note C5, a quarter note B4, a quarter note A4, and a half note G4. Below the staff, there are three lines of lyrics in Cyrillic script:

ви	—	—	пи	—	—	—	—
не	—	—	сов	—	—	—	—
ста	—	—	па	—	—	—	—

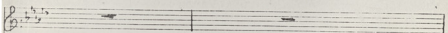
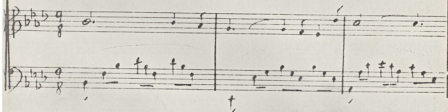
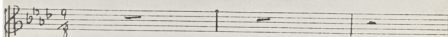
Handwritten musical notation on a five-line staff with a treble clef and a key signature of three flats. The notes are: a half note G4, a quarter note A4, a quarter note B4, a half note C5, a quarter note B4, a quarter note A4, and a half note G4. Below the staff, there are three lines of lyrics in Cyrillic script:

ви	—	—	пи	—	—	—	—
не	—	—	сов	—	—	—	—
ста	—	—	па	—	—	—	—



(ΑΙΧΜΗΡΕΙ, 5/319)

3^α
« ΕΝΟΣΑΤΕ »



1/2

TABLE

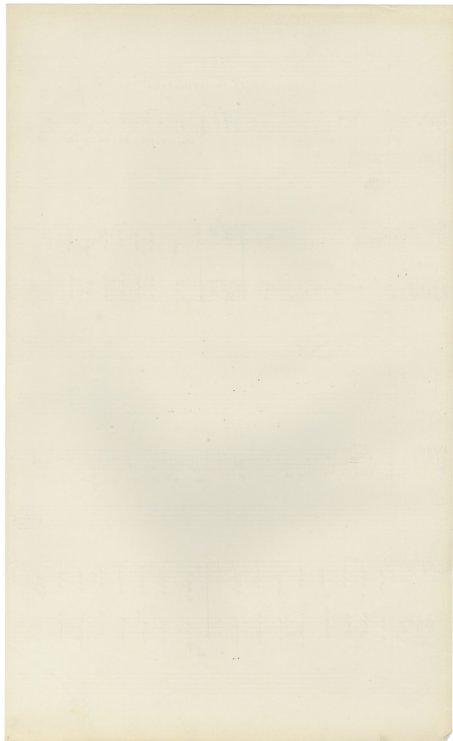
((' H ΕΤΙΚΗΡΥΞΗ.))

Handwritten musical notation on a single staff. The key signature is two flats (B-flat and E-flat). The time signature is 8/4. The melody begins with a whole rest, followed by a series of quarter notes: G4, A4, B4, C5, B4, A4, G4. The lyrics below the staff are: "Σεις ε πο ης αυ το οε ρα"

Handwritten musical notation on two staves. The top staff is in treble clef with a key signature of two flats and a time signature of 8/4. It contains a whole note chord (G4, Bb4, D5) followed by a series of chords. The bottom staff is in bass clef with a key signature of two flats and a time signature of 8/4. It contains a series of chords corresponding to the top staff.

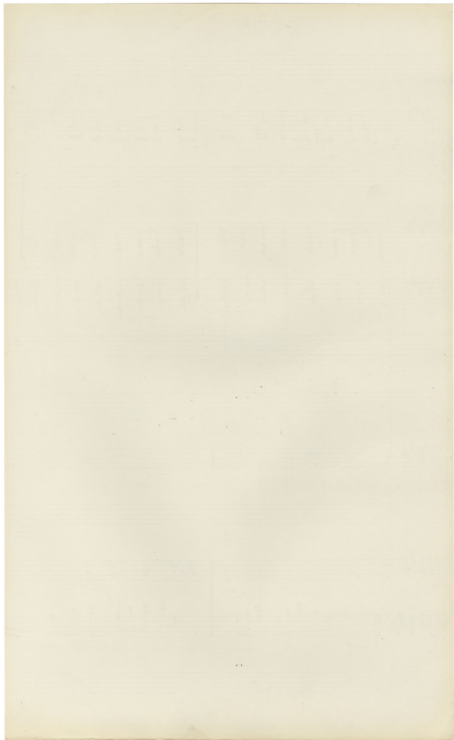
Handwritten musical notation on a single staff. The key signature is two sharps (F# and C#). The time signature is 8/4. The melody consists of quarter notes: G4, A4, B4, C5, B4, A4, G4. The lyrics below the staff are: "ου οε ρα ρε αυ ρε - ρι αυ ρι οε αυ ρο αυ ρο αυ"

Handwritten musical notation on two staves. The top staff is in treble clef with a key signature of two sharps and a time signature of 8/4. It contains a series of chords. The bottom staff is in bass clef with a key signature of two sharps and a time signature of 8/4. It contains a series of chords corresponding to the top staff.



Handwritten musical score for a vocal line with lyrics and piano accompaniment. The score is written on three staves. The top staff is the vocal line, the middle staff is the piano accompaniment, and the bottom staff is the piano accompaniment. The key signature is one sharp (F#) and the time signature is 9/8. The lyrics are: "E u si voi souf Xouv a wo yio zai8 sou nra sou, ma Xou - pi". A fermata is placed over the final note of the vocal line. A '3' is written above the second measure of the vocal line, indicating a triplet. The piano accompaniment consists of chords and single notes.

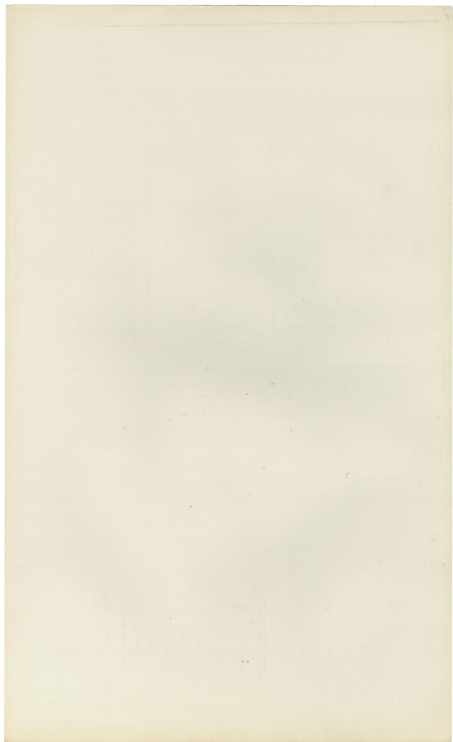
Handwritten musical score for a piano accompaniment. The score is written on three staves. The top staff is the piano accompaniment, the middle staff is the piano accompaniment, and the bottom staff is the piano accompaniment. The key signature is one sharp (F#) and the time signature is 9/8. The score consists of chords and single notes.



- 13 -

Handwritten musical score for the first system, measures 1-3. The system consists of three staves. The top staff is a treble clef with a key signature of two sharps (F# and C#) and a common time signature (C). It contains three measures of whole rests. The middle staff is a treble clef with the same key signature and time signature. It contains three measures of music: a dotted half note, a half note, and a quarter note, all beamed together. The bottom staff is a bass clef with the same key signature and time signature. It contains three measures of music: a dotted half note, a half note, and a quarter note, all beamed together. There are small vertical marks below the first two measures of the bottom staff.

Handwritten musical score for the second system, measures 4-6. The system consists of three staves. The top staff is a treble clef with a key signature of two sharps (F# and C#) and a common time signature (C). It contains three measures of music: a dotted half note, a half note, and a quarter note, all beamed together. The middle staff is a treble clef with the same key signature and time signature. It contains three measures of music: a dotted half note, a half note, and a quarter note, all beamed together. The bottom staff is a bass clef with the same key signature and time signature. It contains three measures of music: a dotted half note, a half note, and a quarter note, all beamed together. There are small vertical marks below the first and third measures of the bottom staff.

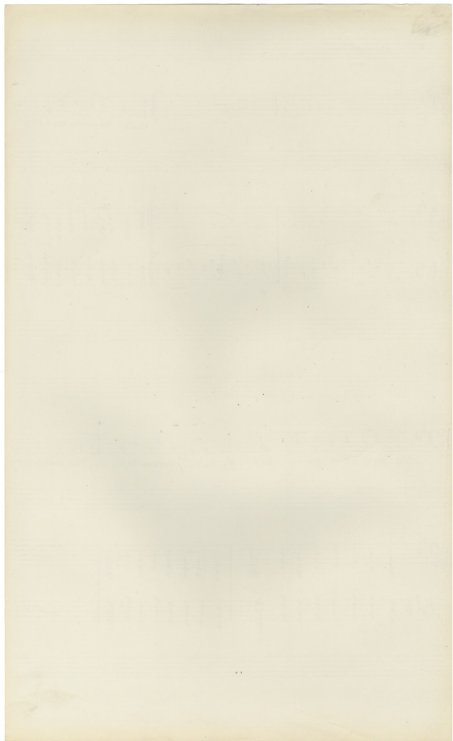


Handwritten musical notation on a single staff. The key signature is two sharps (F# and C#), and the time signature is common time (C). The notation includes a double bar line and a fermata. Below the staff, the lyrics "Στοις ἐπέφασιναι οὐς ἀγο πῆς" are written in Greek.

Handwritten musical notation on two staves. The top staff is in treble clef and the bottom staff is in bass clef. Both are in the key of D major (two sharps). The notation includes various note values, rests, and a double bar line. Below the staves, there are some faint markings, possibly indicating fingerings or breath marks.

Handwritten musical notation on a single staff. The key signature is two sharps (F# and C#), and the time signature is common time (C). The notation includes a double bar line and a fermata. Below the staff, the lyrics "Γρά φαις ὀρο πα - μου ἔε ἡα ἡν ἰπρεσσε τας πῆς οὐρ ὄρο πενιπτο πεπῆς" are written in Greek.

Handwritten musical notation on two staves. The top staff is in treble clef and the bottom staff is in bass clef. Both are in the key of D major (two sharps). The notation consists of dense chordal textures with many notes per measure, typical of a lute or guitar accompaniment. It ends with a double bar line and a fermata.

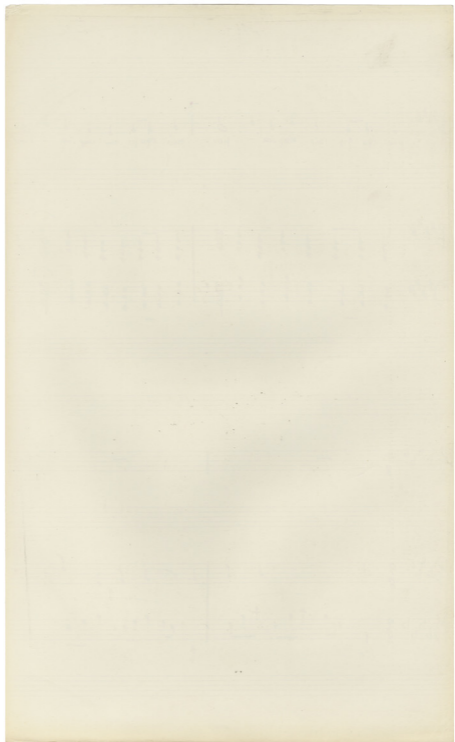


Handwritten musical notation on a single staff with lyrics in Greek. The lyrics are: "μου αγαπης στη καρδια - μου μου αγαπης στη καρδια - μου".

Handwritten musical notation on two staves, likely representing a piano accompaniment. It features chords and rhythmic patterns.

Handwritten musical notation on a single staff, showing a key signature change to three flats and a 9/8 time signature.

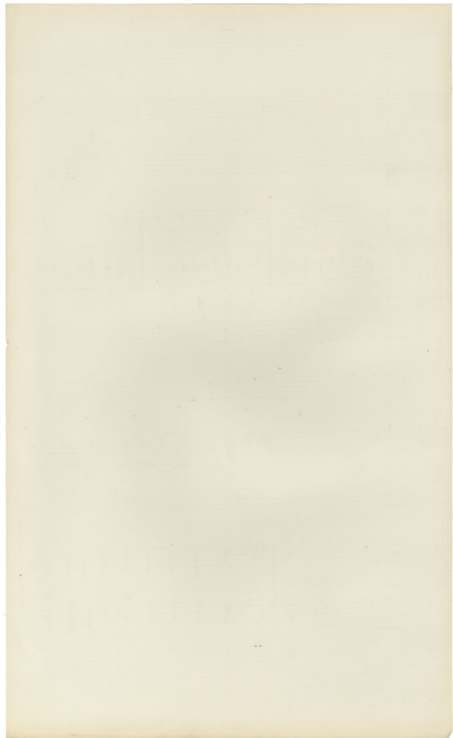
Handwritten musical notation on two staves, continuing the piece with a key signature of three flats and a 9/8 time signature.



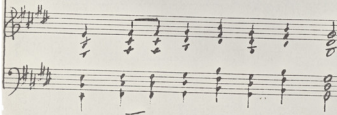
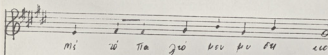
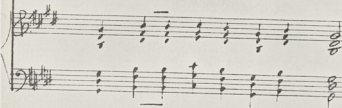
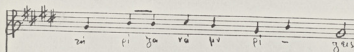
Handwritten musical score on two staves. The top staff is in treble clef with a key signature of three flats (B-flat, E-flat, A-flat). The bottom staff is in bass clef with the same key signature. The music consists of several measures with notes, rests, and slurs. There are some red markings, including a star and a cross, above the notes.

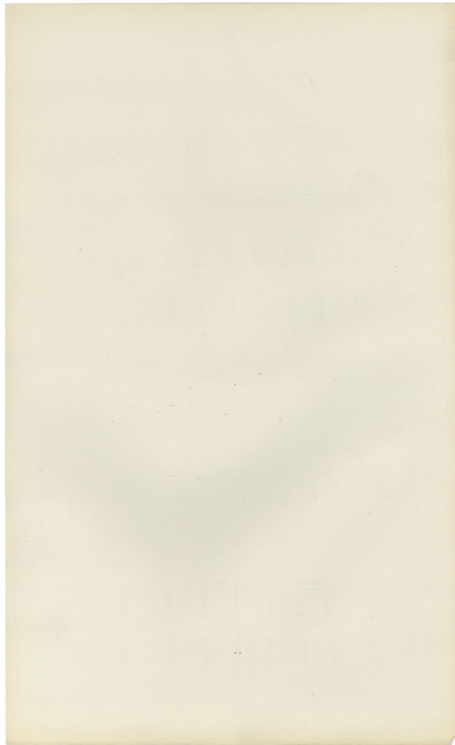
Handwritten musical score on a single staff in treble clef with a key signature of three flats. The staff contains a few notes and rests. Below the staff, there is a line of handwritten text: *San regnum tuum Domine*.

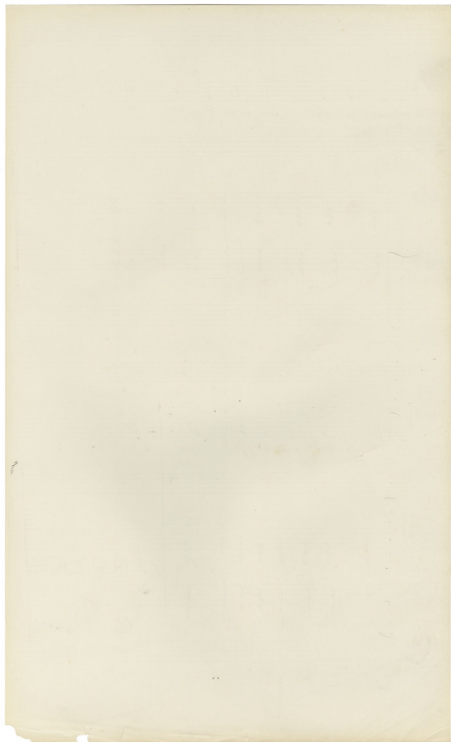
Handwritten musical score on two staves. The top staff is in treble clef with a key signature of three flats. The bottom staff is in bass clef with the same key signature. The music consists of several measures with notes, rests, and slurs. There are some red markings, including a star and a cross, above the notes.



- 12 -







4. ΣΤΟ ΠΑΖΑΡΙ ΤΟΥ ΦΟΙΝΙΑ

54/300

11/8

Στο Παζαρι του Φοινια

στο Παζαρι του Φοινια

στο Παζαρι του Φοινια

στο Παζαρι του Φοινια

2/24

2/24

2/24

10

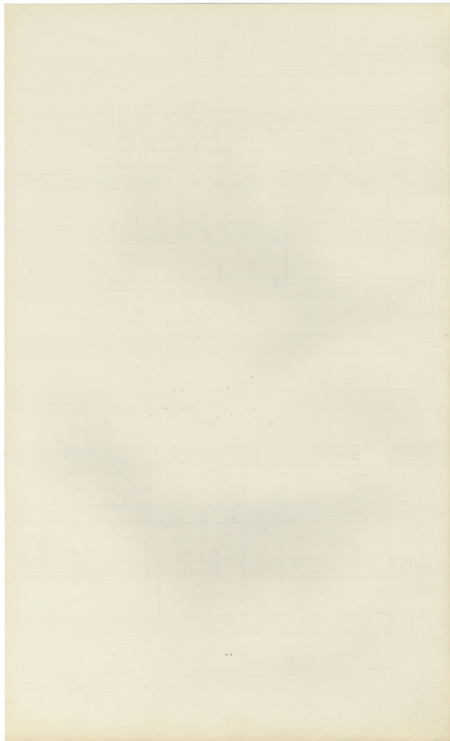
ΕΤΟ ΤΗΖΑΡΙ ΤΟΥ ΟΒΟΝΗΑ.

α σου
 ού πι
 γη, τον
 πα τον

uin' tpa ni dop ra sou ugr
 La tba to tpa di sou er
 Tni pa re uai to ai pa
 Kia ja' ton pou ta ja pa

και
 νλα
 τον
 σα

a ra tta a ra tta
 Kai Tougou sa kai Tougou sa za
 A RA TTA A RA TTA A
 Magu di des Magu di des



Handwritten musical score for the first system. It consists of three staves: a vocal line in G major (one sharp) and 4/4 time, and two piano accompaniment staves. The lyrics are written below the vocal line.

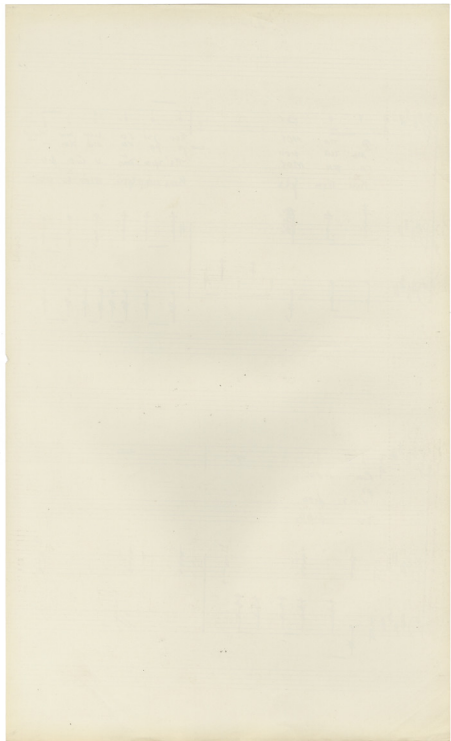
Vocal line lyrics:
 Α. ΤΗ ΜΟΥ ΤΟΥ ΠΑΤΕΡΑ ΚΑΙ ΤΟΥ ΚΑΙ
 ΜΑ ΤΑ ΚΟΥ ΟΥ ΠΑΤΕΡΑ ΑΝΑΧΘΗΝΑ
 ΓΑ ΤΗ ΜΟΥ ΤΗΣ ΓΑΡ ΤΗΣ ΚΑΙ ΚΑΙ
 Και Της Και κατ'εξουσιαστων ερω

The piano accompaniment features a simple harmonic structure with chords and moving lines in both hands.

Handwritten musical score for the second system. It consists of three staves: a vocal line in G major (one sharp) and 3/4 time, and two piano accompaniment staves. The lyrics are written below the vocal line.

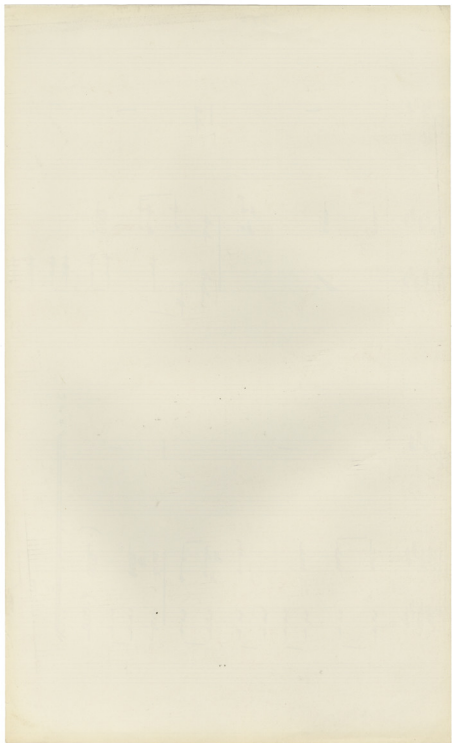
Vocal line lyrics:
 4 ΓΑ ΚΟΥ
 ΠΙ ΚΑΙ ΚΟΥ
 ΣΑ ΚΟΥ

The piano accompaniment continues with chords and rhythmic patterns in both hands.



The first system of the handwritten musical score consists of two staves. The upper staff is in treble clef with a key signature of two sharps (F# and C#). It begins with a whole rest, followed by a bar line and a half note chord consisting of F# and C#. The lower staff is in bass clef with the same key signature. It starts with a double bar line and a slash, indicating a rest. After a bar line, it contains a half note chord of F# and C#, followed by four quarter notes: F#, C#, F#, and C#.

The second system of the handwritten musical score also consists of two staves. The upper staff is in treble clef with a key signature of two sharps. It begins with a whole rest, followed by a bar line and a half note chord of F# and C#. The lower staff is in bass clef with the same key signature. It starts with a double bar line and a slash, followed by a bar line and a half note chord of F# and C#. The system concludes with a double bar line and the word "EN!" written below the staff. Above the right end of the staves, the numbers 16, 12, 8, and 4 are written vertically.



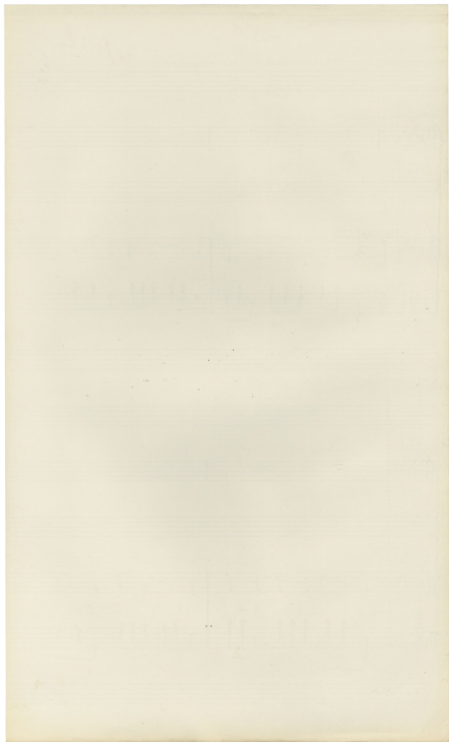
nr/3ii P

Handwritten musical notation on a single staff, including a treble clef, a key signature of three flats (B-flat, E-flat, A-flat), and a 9/8 time signature.

Handwritten musical notation for a piano accompaniment. The upper staff is labeled "IN TERMEZZO" and features a treble clef, a key signature of three flats, and a 9/8 time signature. The lower staff features a bass clef, a key signature of three flats, and a 9/8 time signature, with dense chordal textures.

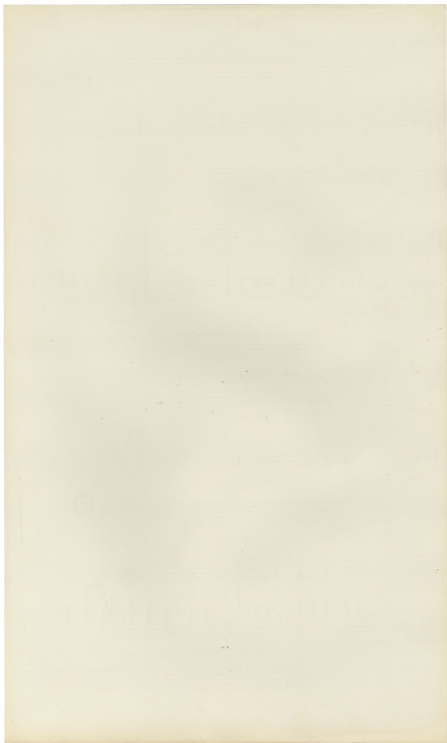
Handwritten musical notation on a single staff, including a treble clef, a key signature of three flats, and a 9/8 time signature.

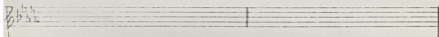
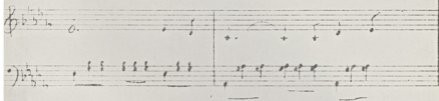
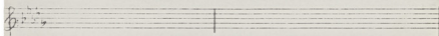
Handwritten musical notation for a piano accompaniment. The upper staff features a treble clef, a key signature of three flats, and a 9/8 time signature. The lower staff features a bass clef, a key signature of three flats, and a 9/8 time signature, with dense chordal textures.

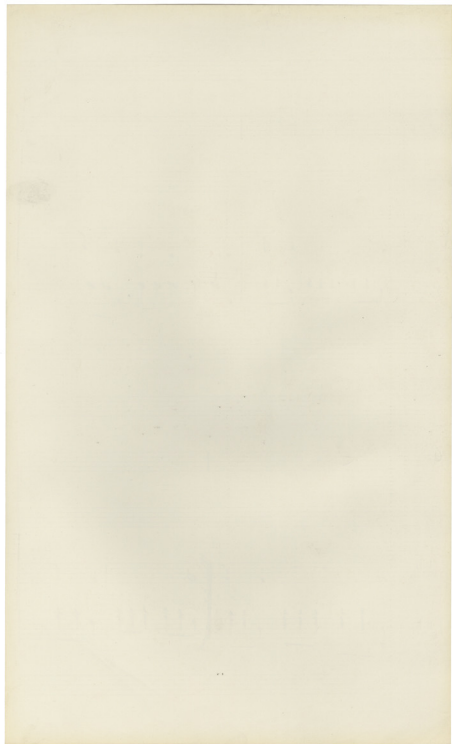


The first system of the handwritten musical score consists of two staves. The upper staff is in treble clef with a key signature of two flats (B-flat and E-flat) and a common time signature. It contains a melodic line with a dotted quarter note, a half note, and a quarter note, followed by a measure with a dotted quarter note, a half note, and a quarter note. The lower staff is in bass clef with the same key signature and time signature. It features a series of chords, with a double bar line in the middle of the system. A fermata is placed over the final note of the upper staff.

The second system of the handwritten musical score also consists of two staves. The upper staff is in treble clef with a key signature of two flats and a common time signature. It contains a melodic line with a dotted quarter note, a half note, and a quarter note, followed by a measure with a dotted quarter note and a half note. The lower staff is in bass clef with the same key signature and time signature. It features a series of chords, with a double bar line in the middle of the system.

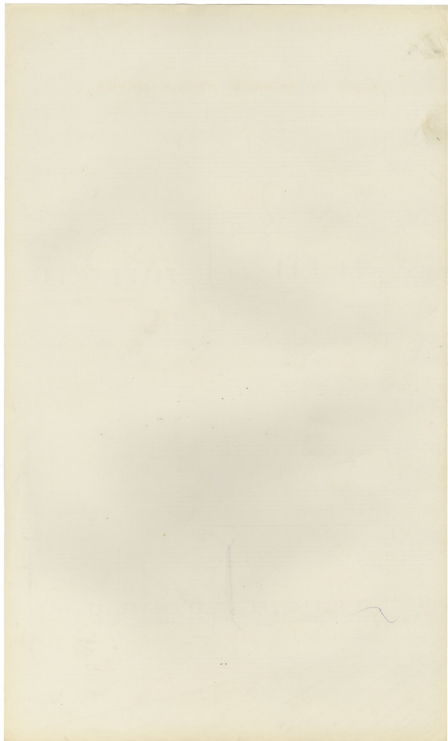






Handwritten musical score for the first system. It consists of two staves. The top staff is in treble clef with a key signature of three flats (B-flat, E-flat, A-flat) and a common time signature. The bottom staff is in bass clef with the same key signature and time signature. The music features a melodic line in the treble and a rhythmic accompaniment of chords in the bass. A fermata is placed over the final note of the treble staff.

Handwritten musical score for the second system. It consists of two staves. The top staff is in treble clef with a key signature of three flats and a common time signature. The bottom staff is in bass clef with the same key signature and time signature. The music features a melodic line in the treble and a rhythmic accompaniment of chords in the bass. A red vertical line is drawn through the music, separating it into two sections labeled 'I' and 'II'. The word 'TRIPLE' is written in the right margin, and 'ENS' is written at the end of the system.



ΗΡΘΑΝ Η ΑΝΘΡΩΠΟΙ ΜΕ ΤΑ ΜΑΥΡΑ
ΙΡΘΑΝ Ι ΑΝΘΡΩΠΟΙ ΜΕ ΤΑ ΜΑΥΡΑ

54/312

55

Handwritten musical score for the first system. It features a treble clef and a bass clef, both with a key signature of two flats (B-flat and E-flat) and a 4/4 time signature. The music consists of a series of chords and rhythmic patterns, primarily using quarter and eighth notes.

Handwritten musical score for the second system. It includes a treble clef with a key signature of two flats and a 4/4 time signature. The music features a vocal line with lyrics and piano accompaniment. There are circled annotations: 'AD' and 'A' in red circles above the first measure, and a circled '4' at the end of the system. The lyrics are: "Τὴν ἔβαλεν ἐν τῷ ὄρει" and "Τὴν πέταρε ἐν τῷ ὄρει".

Handwritten musical score for the third system. It continues the piano accompaniment from the previous system, featuring a treble clef and a bass clef with a key signature of two flats and a 4/4 time signature. The music consists of a series of chords and rhythmic patterns.

Handwritten musical score for the first system. It features a vocal line with lyrics and a piano accompaniment. The lyrics are: "Noi kor kis yi ii cu r vi go - - ua noi to go pu sa pas tra". There are two red circles above the staff, containing the numbers "11" and "12".

Handwritten musical score for the second system. It features a vocal line with lyrics and a piano accompaniment. The lyrics are: "ovos zov A zo zo i di fi e Apo kos tis pas tei yu ni pas Apo tis". There are three red circles above the staff, containing the numbers "13", "14", and "15".

Handwritten musical score for the first system. It consists of two vocal staves and a piano accompaniment. The key signature has one sharp (F#) and the time signature is 3/4. The lyrics are written below the vocal staves.

Vocal 1: *us) vi i di upe na oi vos*

Vocal 2: *Yui un A ja un na i vos*

Piano accompaniment: *2^o op Xocum*

Handwritten musical score for the second system. It consists of two vocal staves and a piano accompaniment. The key signature has one sharp (F#) and the time signature is 3/4. The lyrics are written below the vocal staves. There are red circles around the first two notes of the first vocal line.

Vocal 1: *H pla. na epw dei fi za fau pa*

Vocal 2: *ya Xocum ozi dei zpa nai ozi Xw pa*

Piano accompaniment: *2^o op Xocum*

16
9

Handwritten musical score for the first system. The vocal line is in G major and 3/4 time. The lyrics are: "Thaie Kou ou A za di sea la ppa zous Kiv oze pa PaX zov omi Kou dia Lou". A circled number '7' is written above the second measure of the vocal line. The piano accompaniment consists of chords in the right hand and bass notes in the left hand.

28
14
9

Handwritten musical score for the second system. The vocal line continues with lyrics: "ou a zoi ou i xou es ep' An' iou iou Me i pi ou ou ou ou". An arrow points from the word "An'" in the vocal line to the word "An'" in the piano accompaniment. The piano accompaniment continues with chords and bass notes.



11
8

8

Handwritten musical notation for the first system, including a treble clef, a key signature of two flats, and a 4/4 time signature. The melody consists of several measures with notes and rests. Below the staff, the lyrics are written in Greek: "ξε φα και υπ αυ το οι Κο το", "Μο πο σα φα τα αυ οα Αα -".

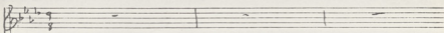
Handwritten musical notation for the second system, including a bass clef and a key signature of two flats. The accompaniment consists of several measures with chords and single notes.

9

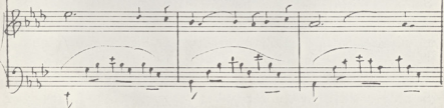
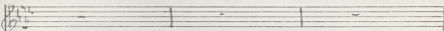
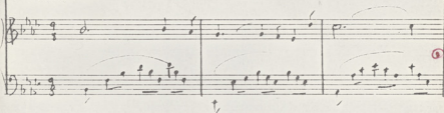
Handwritten musical notation for the third system, including a treble clef, a key signature of two flats, and a 4/4 time signature. The melody consists of several measures with notes and rests. Below the staff, the lyrics are written in Greek: "ita - ο", "Tous", "αυ ο φευ."

Handwritten musical notation for the fourth system, including a treble clef, a key signature of two flats, and a 4/4 time signature. The melody consists of several measures with notes and rests. Below the staff, the lyrics are written in Greek: "D.C. (CENOSATE)" with an arrow pointing to the right.

re/322 b.



INTERMEZZO



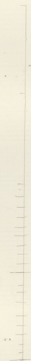
Handwritten musical score for the first system. The top staff is a treble clef with a key signature of two flats (B-flat and E-flat). The bottom staff is a bass clef with the same key signature. The music consists of several measures. A circled '2' is written in the bass staff, indicating a second ending. There are various note values, including quarter notes, eighth notes, and rests, with some notes beamed together. A fermata is placed over a note in the treble staff.

Handwritten musical score for the second system. The top staff is a treble clef with a key signature of two flats (B-flat and E-flat). The bottom staff is a bass clef with the same key signature. The music consists of several measures. A circled '3' is written in the bass staff, indicating a third ending. There are various note values, including quarter notes, eighth notes, and rests, with some notes beamed together. A fermata is placed over a note in the treble staff.

Handwritten musical notation on a single staff, including a treble clef and a key signature of two flats (B-flat and E-flat).

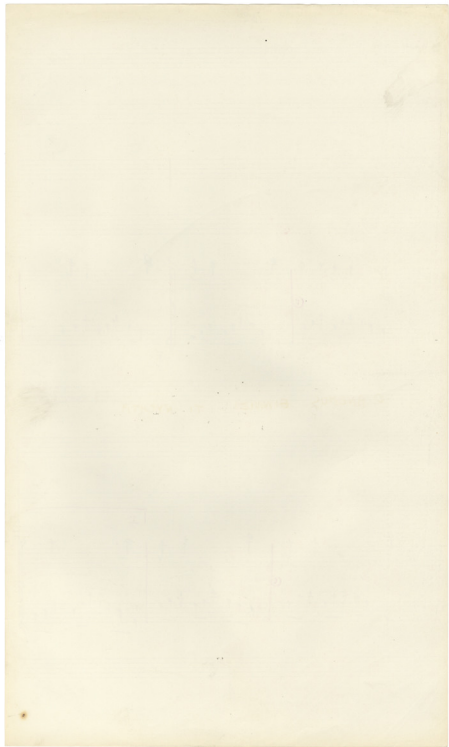
Handwritten musical notation on two staves. The upper staff is in treble clef with a key signature of two flats, featuring a melodic line with slurs and accents. The lower staff is in bass clef with a key signature of two flats, featuring a bass line with slurs and accents. A red circle is drawn around a note in the lower staff.

Handwritten musical notation on two staves, continuing the piece. The upper staff is in treble clef with a key signature of two flats, and the lower staff is in bass clef with a key signature of two flats. Both staves contain melodic and bass lines with slurs and accents.



The first system of the handwritten musical score consists of two staves. The upper staff is in treble clef with a key signature of two flats (B-flat and E-flat). It contains a series of notes, some with stems pointing up and some with stems pointing down. A red vertical line is drawn after the first measure, with a circled 'C' below it. A second red vertical line is drawn after the fourth measure, with a circled '7' above it. The lower staff is in bass clef with a key signature of two flats. It contains notes with stems pointing up and down, mirroring the rhythmic pattern of the upper staff. A red vertical line is drawn after the first measure, with a circled 'C' below it. A second red vertical line is drawn after the fourth measure, with a circled '7' below it.

The second system of the handwritten musical score consists of two staves. The upper staff is in treble clef with a key signature of two flats. It contains notes with stems pointing up and down. A red vertical line is drawn after the first measure, with a circled 'C' below it. A second red vertical line is drawn after the second measure, with a circled '9' above it. A third red vertical line is drawn after the third measure, with a circled 'I' above it. The lower staff is in bass clef with a key signature of two flats. It contains notes with stems pointing up and down. A red vertical line is drawn after the first measure, with a circled 'C' below it. A second red vertical line is drawn after the second measure, with a circled '9' below it. A third red vertical line is drawn after the third measure, with a circled 'I' below it.



II

6

<< ENOZATE >>

6

O ANEMOS EINNIZI TI NYCHTA
 O ANEMOS TENNHZE TH NYXTA

EL/N

B: BASS B: BASS

Handwritten musical notation on a single staff with lyrics: "a re kor ja wa ee in ni xia war re the + - -"

Handwritten musical notation on two staves, likely representing accompaniment for the first system.

Handwritten musical notation on a single staff with lyrics: "ra kor kie pi re wa ga eta war juw pi ee ni ba ga eta eb"

Handwritten musical notation on two staves, likely representing accompaniment for the second system. Includes a circled annotation: "p. no. 111111"

Musical staff with lyrics: Ba - - - - - Os

Musical staff with lyrics: K'ô M' Xto jô vs vs ca d'ô pa K'ô - - -

Accompanying chords for the first system, including bass clef accompaniment.

Musical staff with lyrics: X'ô " Kiz jô vs ôi pa vs un' deu jô fôu pa vôt

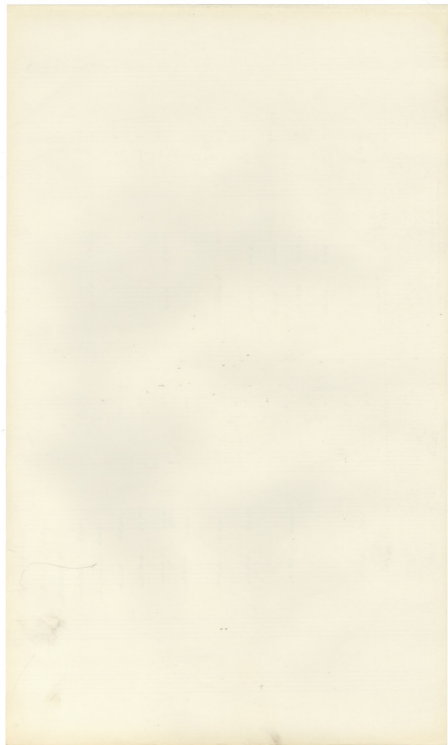
Accompanying chords for the second system, including bass clef accompaniment.

Musical staff with lyrics: Kar dan CE in ras Ki' E y' vs pas uai

Two musical staves with chordal accompaniment for the first system.

Musical staff with lyrics: juo pl es so pas in ja - - - - - + + + + +

Two musical staves with chordal accompaniment for the second system.



Andante *Tempo*

Το ἀγα- σου ἦ κι πες ἔν ο ο α η ρ ος

ἦ ἦν οἱ ἦν δι' ἑσπ' ἡμῶν Μῶν οἱ σὺν Κεῖ ἦ ἦ οἱ ἑσπ' ἡμῶν

Handwritten musical score for the first system. The top staff is a vocal line in G major (one sharp) with a treble clef. The lyrics are: "γνώ ρι σε σε θα υπυ τα πα τωωντων κυρι τι υπα γε ννη ες ζωω ωω". There are slurs over the first two phrases and a six-measure rest (marked '6') over the final phrase. The piano accompaniment consists of two staves below the vocal line, with chords and some melodic lines.

Handwritten musical score for the second system. The top staff is a vocal line in G major with a treble clef. The lyrics are: "χι ναι τα δου για ναι γε τι τον τα ο αν η γρη α". There are slurs over the first two phrases and a three-measure rest (marked '3') over the final phrase. The piano accompaniment consists of two staves below the vocal line, with chords and some melodic lines.

Handwritten musical score for the third system. The top staff is a vocal line in G major with a treble clef. The lyrics are: "γω α ερ σε τα ναι κρι τα τα κρι γε τε ερ ποσ ναι για ρι τον ε". There are slurs over the first two phrases and a three-measure rest (marked '3') over the final phrase. The piano accompaniment consists of two staves below the vocal line, with chords and some melodic lines.



Trio *2^{do}* 2

Epi sui sui sui - - pa zous H ac fcs di 0

Tenpo 3

0 'A ve los je rrm os znu Ne zpa uai zo zi. &+

4

po Ke yi ve 'Ar zpa uai jw p 06 0 'Ar zpa, znu du va fcs zcu

6

Ki'i Ti' rpa je vva 66 ja s6n nai z6 to x60 Kie ji ve va

6

Xai pi vai nap pui vai 66v - ve 60

7

Kie ji ve ju vai ua vai ju pte' m ju rama ni to va

ΚΑΙ ΠΕΣ ΠΕΝΤΕ ΕΣ ΑΒΡΑΑΜ ΖΕ ΕΣΤΙ ΠΕΣ

7 Ο ΛΟΓΟΣ Ο ΣΤΕΡΝΟΣ
 7 Ο ΛΟΓΟΣ Ο ΣΤΕΡΝΟΣ

2/114

2/102 11

3/4

ΚΑΙ ΠΕΣ ΠΕΝΤΕ ΕΣ ΑΒΡΑΑΜ ΖΕ ΕΣΤΙ ΠΕΣ

7 Ο ΛΟΓΟΣ Ο ΣΤΕΡΝΟΣ
 7 Ο ΛΟΓΟΣ Ο ΣΤΕΡΝΟΣ

2/114

2/102 11

3/4

0 ЛОРДЪ О СТЕРНЪ
M

Handwritten musical score for the first system. The key signature is four flats (B-flat, E-flat, A-flat, D-flat). The time signature is 3/4. The system consists of three staves: a vocal line, a piano right-hand part, and a piano left-hand part. The vocal line begins with the lyrics "Ta na - - - gi pou zo". The piano accompaniment features chords and rhythmic patterns.

Handwritten musical score for the second system. The key signature remains four flats. The time signature is 3/4. The system consists of three staves. The vocal line continues with the lyrics "Ti ei zo fu zia ta." and includes a fermata over the final note. The piano accompaniment continues with chords and rhythmic patterns, including a first ending bracket labeled "I".

Musical staff with treble clef, key signature of three flats (B-flat, E-flat, A-flat), and a 2/4 time signature. The melody consists of a whole note followed by a half note, then a quarter note, and another half note. The lyrics are: *θα ρα δε θα ρα*

Accompanying piano part for the first system, featuring chords in the right hand and bass notes in the left hand.

Musical staff with treble clef, key signature of three flats, and a 2/4 time signature. The melody continues with the lyrics: *ΤΕΟ ΟΙ ΠΑΤΕΡΩ*. The system concludes with a fermata over a whole note and the word *Καπ* (Cappella).

Accompanying piano part for the second system, continuing the harmonic support for the vocal line.

Handwritten musical notation on a single staff. The key signature is three flats (B-flat, E-flat, A-flat). The melody begins with a red 'v' above the first note. The lyrics are: "pu rouu rouu quo rouu quo rouu quo rouu des".

Handwritten musical notation on two staves. The top staff is in treble clef and the bottom staff is in bass clef. Both staves show chordal accompaniment for the first system of the piece.

Handwritten musical notation on a single staff. The key signature is three flats. The lyrics are: "rouu - - - Au jouu rouu quo".

Handwritten musical notation on two staves. The top staff is in treble clef and the bottom staff is in bass clef. Both staves show chordal accompaniment for the second system of the piece.

Handwritten musical notation for the first system, featuring a vocal line with lyrics: "via des oi - po via des". The notation includes a treble clef, a key signature of two flats (B-flat and E-flat), and a time signature of 2/4. The lyrics are written below the notes.

Handwritten musical notation for the second system, featuring piano accompaniment. The notation includes a treble clef and a bass clef, a key signature of two flats, and a time signature of 2/4. The piano part consists of chords and rhythmic patterns.

Handwritten musical notation for the third system, featuring a vocal line with lyrics: "oi - po - via des ziv - Au". The notation includes a treble clef, a key signature of two flats, and a time signature of 2/4. The lyrics are written below the notes.

Handwritten musical notation for the fourth system, featuring piano accompaniment. The notation includes a treble clef and a bass clef, a key signature of two flats, and a time signature of 2/4. The piano part consists of chords and rhythmic patterns.

Musical notation for the first system, featuring a treble clef, a key signature of two flats, and a 3/4 time signature. The notes are ym and Ma Gioia P' .

Musical notation for the second system, including a bass clef and a 3/4 time signature. The notation shows chords and melodic lines.

Musical notation for the third system, featuring a treble clef, a key signature of two flats, and a 3/4 time signature. The notes are jo and ei jo .

Musical notation for the fourth system, including a bass clef and a 3/4 time signature. The notation shows chords and melodic lines.

Handwritten musical notation for the first system. The vocal line is in treble clef with a key signature of two flats and a common time signature. The lyrics are "да - - - - - Крв а". The piano accompaniment is in bass clef, showing chords and a double bar line.

Handwritten musical notation for the second system. The piano accompaniment is in bass clef, showing chords and a double bar line.

Handwritten musical notation for the third system. The vocal line is in treble clef with a key signature of two flats and a common time signature. The lyrics are "ка аоіасті јо і ја да - - - - - Крв". The piano accompaniment is in bass clef, showing chords and a double bar line.

Handwritten musical notation for the fourth system. The piano accompaniment is in bass clef, showing chords and a double bar line.

Handwritten musical score for the first system. The vocal line is in G major (one sharp) and 3/4 time. The lyrics are: "a o jo pas o cep ros ea". The piano accompaniment consists of chords in the right hand and a bass line in the left hand.

Handwritten musical score for the second system. The vocal line is in G major (one sharp) and 3/4 time. The lyrics are: "vou Tiou ji NE upo ero Xw fa". The piano accompaniment continues with chords and a bass line.

Θα γαι η λω μι πας τραϊ - - वो देव ते खै

Gü ye zis ü pes soufu övür öi zpanf

zi es di xws pa - tra

ki ri rau za o tra di o zo gra oia xa pa

kw - - - - - ma za rd

Handwritten musical notation for the first system, featuring a vocal line with lyrics: "se fus va se pus va se -". The notation includes a treble clef, a key signature of two flats, and a common time signature.

Handwritten musical notation for the second system, continuing the vocal line from the first system.

Handwritten musical notation for the third system, featuring a piano accompaniment with chords and rests.

Handwritten musical notation for the fourth system, featuring a vocal line with lyrics: "peu va se peu". The notation includes a treble clef, a key signature of two flats, and a common time signature.

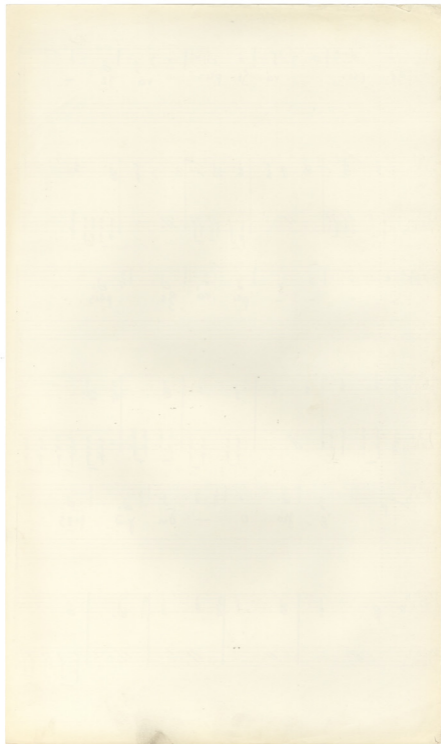
Handwritten musical notation for the fifth system, continuing the vocal line from the fourth system.

Handwritten musical notation for the sixth system, featuring a piano accompaniment with chords and rests.

Handwritten musical notation for the seventh system, featuring a vocal line with lyrics: "E ju o - du ju pas". The notation includes a treble clef, a key signature of two flats, and a common time signature.

Handwritten musical notation for the eighth system, continuing the vocal line from the seventh system.

Handwritten musical notation for the ninth system, featuring a piano accompaniment with chords and rests.



Musical staff with lyrics: omi oji pi ru xu - - pa - - e

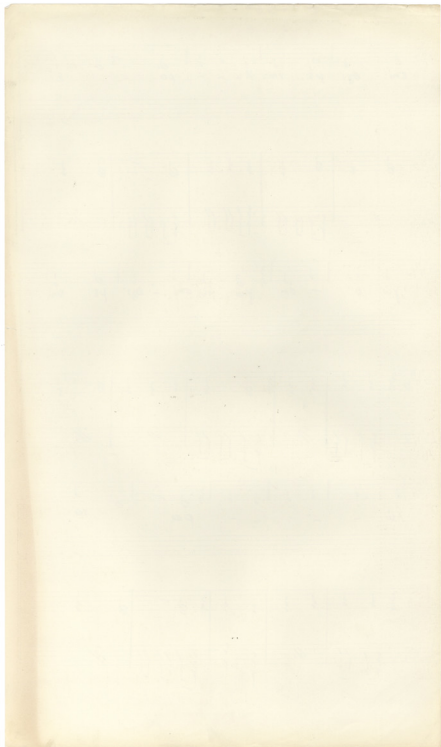
Musical staff with piano accompaniment.

Musical staff with lyrics: ju o - om ju pes omi - oji pi ru

Musical staff with piano accompaniment.

Musical staff with lyrics: xu - - - - pa ra

Musical staff with piano accompaniment.



Handwritten musical notation on a single staff with lyrics: *Sei peis va Sei peis va Sei*

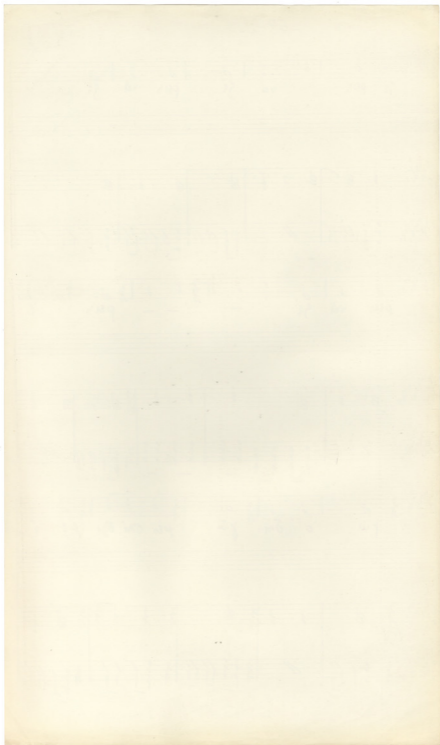
Handwritten musical notation on two staves (treble and bass clef) without lyrics.

Handwritten musical notation on a single staff with lyrics: *peis va Sei - - - - - peis e*

Handwritten musical notation on two staves (treble and bass clef) without lyrics.

Handwritten musical notation on a single staff with lyrics: *ru o om ju kis omi byi ke r m*

Handwritten musical notation on two staves (treble and bass clef) without lyrics.



Handwritten musical notation on a single staff with lyrics: *Xw - - pa - - È ju ó an ju*

Handwritten musical notation on two staves (treble and bass clef).

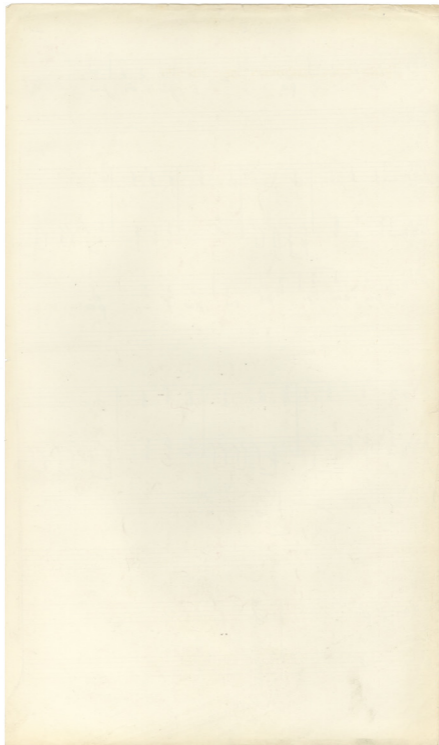
Handwritten musical notation on a single staff with lyrics: *4 pi ó mi ó, 3/4 pi m xw - - pa.*

Handwritten musical notation on two staves (treble and bass clef).

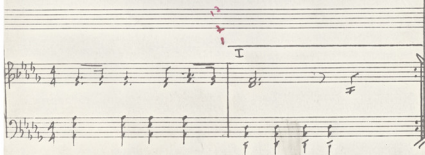
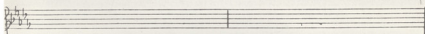
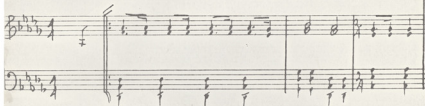
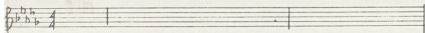
Handwritten musical notation on a single staff with a *rit.* marking.

Handwritten musical notation on a single staff showing a whole note rest.

Handwritten musical notation on two staves (treble and bass clef) showing a whole note rest and a final flourish.



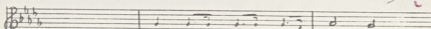
PIRA TOUS EPROMOUS TOU DISTI
THPA TOYS APOMOYS TOY MHSTH.



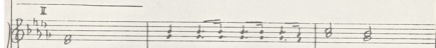
1/10/19

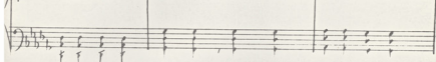
First four specimens for distil

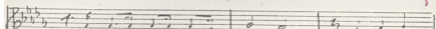
2



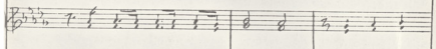
 Τὴ, περὶ τοῦ ἀποκείνου τοῦ ἴου ὀμί —
 Ἐπεὶ ναχὰς ἡσὶ τοῦ τοῦ ἐμοῦ πο —
 Κιτὸ πλεῖστον ἀποκείνου ἀποκείνου τοῦ —

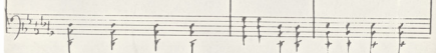
I


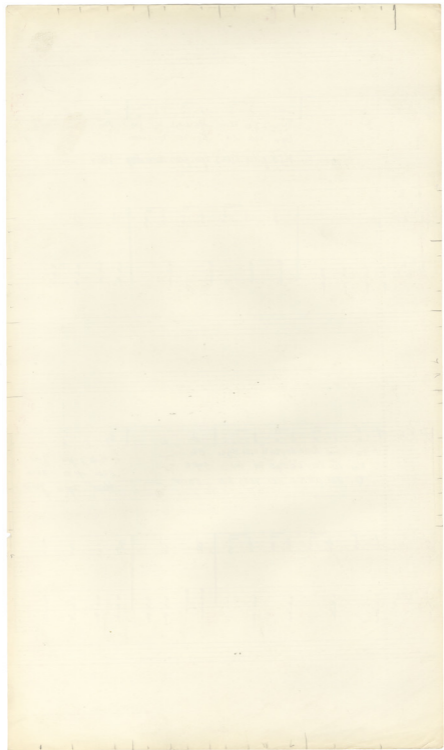


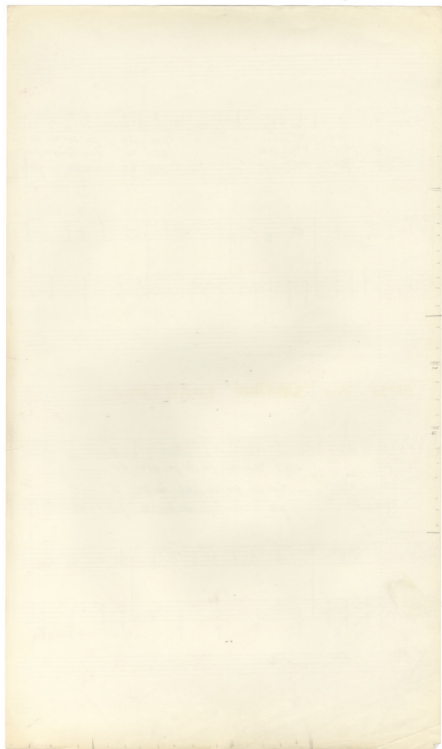


 καὶ ὡς ἀποκείνου τοῦ ἀποκείνου ὀμί — καὶ ἴου ἴου
 καὶ τοῦ ἀποκείνου τοῦ ἀποκείνου — ὀμί ἴου
 ὀμί ἀποκείνου τοῦ ἀποκείνου τοῦ ἀποκείνου — καὶ ἴου ἴου









11
?

Handwritten musical score for the first system. It consists of a vocal line with lyrics in Greek and a piano accompaniment. The key signature has two flats (B-flat and E-flat), and the time signature is 7/8. The lyrics are: *ye pu pi va ta zhi cw*, *ei mi'rov tra u po fe ro*, *kas pa en za oth na' xm*. The piano part includes chords and a section marked "D.C." (Da Capo).

1) ΑΙΤΙΔΙ ΤΟΥ ΘΑΡΤΗΟΥ ~~ΘΑΡΤΗΟΥ~~ *12/11*
 2) ΑΥΤΟΙ ΤΟΥ ΘΑΡΤΟΥ

Handwritten musical score for the second system. It consists of a vocal line with lyrics in Greek and a piano accompaniment. The key signature has two flats (B-flat and E-flat), and the time signature is 3/4. The lyrics are: *Av mi soi deip soukhalpa tu*, *Ki'ar da pou de' pouzifw mi*, *Ki'ar tra' pour nai ra xpoma pou*. The piano part includes chords and melodic lines.

11
?

Handwritten musical notation with lyrics in Greek:

ye pu pi va ta zhi cw
 eie mi'rov tra u po fe ro
 kas pa en za oth na' xm

Handwritten musical notation for piano accompaniment, including a section marked "D.C." (Da Capo).

1) ΑΙΤΙΔΙ ΤΟΥ ΘΑΡΤΗΟΥ
 2) ΑΥΤΟΙ ΤΟΥ ΘΑΡΤΟΥ

11/11

Handwritten musical notation with lyrics in Greek:

Av mi soi deip soukhalpa tu
 Ki'ar da pou de' pouzifw mi
 Ki'ar tra' pour nai ra xpoma pou

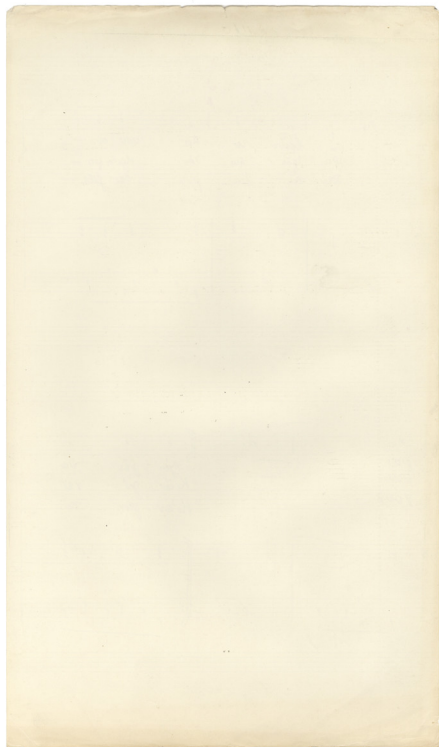
Handwritten musical notation for piano accompaniment.

ALDI FOR BARRON THARTON

2
J
a

Handwritten musical notation for the first system. The top staff is a vocal line with lyrics in three lines: "Na' bpeur zai Aa upu a -", "Da' jani su zov Han po -", and "Sob Ai pa pou Dai pte -". The bottom staff is a piano accompaniment line with a treble clef and a key signature of one flat (Bb). The music consists of several measures with notes and rests.

Handwritten musical notation for the second system. The top staff is a vocal line with lyrics in three lines: "pas", "kou", "your", "Hym jis da", "Kiäv yi ye", and "Häv yu zai". The bottom staff is a piano accompaniment line with a treble clef and a key signature of one flat (Bb). The music consists of several measures with notes and rests.



S
r
2

Bpoi ve uar ua aró uar
 Se vos o Ham fós θά
 Ai παφου ve πό ταν

9
6
3

Ica xar zu xa pa - - kai
 yri su zo ve po - - fou
 Jai uita da zo di - - rouv

